

Elab Fluor® 700 Anti-Human CD38 Antibody[HIT2]

Catalog Number: E-AB-F1058M1

Note: Centrifuge before opening to ensure complete recovery of vial contents.

Description

Reactivity	Human
Host	Mouse
Isotype	Mouse IgG1, κ
Clone No.	HIT2
Isotype Control	Elab Fluor® 700 Mouse IgG1, κ Isotype Control[MOPC-21] [Product E-AB-F09792M1]
Conjugation	Elab Fluor® 700
Conjugation Information	Elab Fluor® 700 is designed to be excited by the Red laser (627-640 nm) and detected using an optical filter centered near 719 nm (e.g., a 725/40 nm bandpass filter).
Storage Buffer	Phosphate buffered solution, pH 7.2, containing 0.09% sodium azide and 1% BSA.

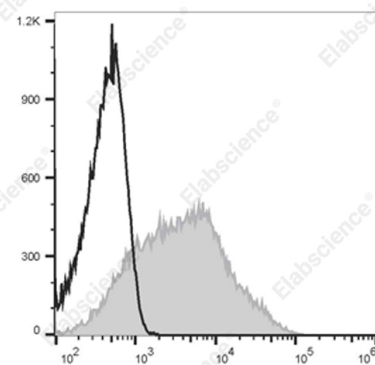
Applications

Recommended usage

FCM

Each lot of this antibody is quality control tested by flow cytometric analysis. **The amount of the reagent is suggested to be used 5 μL of antibody per test (million cells in 100 μL staining volume or per 100 μL of whole blood).** Please check your vial before the experiment. Since applications vary, the appropriate dilutions must be determined for individual use.

Data



Staining of normal human peripheral blood cells with Elab Fluor® 700 Anti-Human CD38 Antibody[HIT2] (filled gray histogram) or Elab Fluor® 700 Mouse IgG1, κ Isotype Control (empty black histogram). Cells in the lymphocytes gate were used for analysis.

Preparation & Storage

Storage	Keep as concentrated solution. This product can be stored at 2-8°C for 12 months. Please protected from prolonged exposure to light and do not freeze.
Shipping	Ice bag

Antigen Information

Alternate Names	2'-phospho-ADP-ribosyl cyclase;2'-phospho-cyclic-ADP-ribose transferase;ADP-ribosyl cyclase 1;ADP-ribosyl cyclase/cyclic ADP-ribose hydrolase 1;ADPRC 1;CD38;Cyclic ADP-ribose hydrolase 1;T10;cADPr hydrolase 1
------------------------	--

For Research Use Only

Uniprot ID

P28907

Gene ID

952

Background

CD38 is a 45 kD type II transmembrane glycoprotein also known as T10. It is an ADP-ribosyl hydrolase expressed at variable levels on hematopoietic cells and in some non-hematopoietic tissues (such as brain, muscles, and kidney). In humans, it is expressed at high levels on plasma cells and activated T and B cells. By functioning as both a cyclase and a hydrolase, CD38 mediates lymphocyte activation, adhesion, and the metabolism of cADPR and NAADP. CD31 is the ligand of CD38.