

# Recombinant Human FLNC protein (His tag)

Catalog Number:PDEH100197



**Note:** Centrifuge before opening to ensure complete recovery of vial contents.

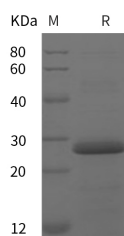
## Description

<b>Synonyms</b>	Filamin C ;Filamin 2;Filamin C;FLN2;FLNC;ABPL;FLN2
<b>Species</b>	Human
<b>Expression Host</b>	E.coli
<b>Sequence</b>	Thr 2519-Pro 2725
<b>Accession</b>	Q14315
<b>Calculated Molecular Weight</b>	22.7 kDa
<b>Observed molecular weight</b>	28 kDa
<b>Tag</b>	N-His

## Properties

<b>Purity</b>	> 95 % as determined by reducing SDS-PAGE.
<b>Endotoxin</b>	Please contact us for more information.
<b>Storage</b>	Generally, lyophilized proteins are stable for up to 12 months when stored at -20 to -80°C. Reconstituted protein solution can be stored at 4-8°C for 2-7 days. Aliquots of reconstituted samples are stable at < -20°C for 3 months.
<b>Shipping</b>	This product is provided as lyophilized powder which is shipped with ice packs.
<b>Formulation</b>	Lyophilized from sterile PBS, pH 7.4. Normally 5 % - 8 % trehalose, mannitol and 0.01 % Tween80 are added as protectants before lyophilization. Please refer to the specific buffer information in the printed manual.
<b>Reconstitution</b>	Please refer to the printed manual for detailed information.

## Data



> 95 % as determined by reducing SDS-PAGE.

## Background

FLNC is a muscle-specific filamin, which plays a central role in muscle cells, probably by functioning as a large actin-cross-linking protein. May be involved in reorganizing the actin cytoskeleton in response to signaling events, and may also display structural functions at the Z-disks in muscle cells. Defects in FLNC are the cause of autosomal dominant filaminopathy. Myofibrillar myopathy (MFM) is a neuromuscular disorder, usually with an adult onset, characterized by focal myofibrillar destruction and pathological cytoplasmic protein aggregations. Autosomal dominant filaminopathy is a form of MFM characterized by morphological features of MFM and clinical features of a limb-girdle myopathy. A heterozygous nonsense mutation which segregates with the disease, has been identified in the FLNC gene.

## For Research Use Only

A Reliable Research Partner in Life Science and Medicine

Toll-free: 1-888-852-8623

Web: [www.elabscience.com](http://www.elabscience.com)

Tel: 1-832-243-6086

Email: [techsupport@elabscience.com](mailto:techsupport@elabscience.com)

Fax: 1-832-243-6017