

Recombinant Human XPNPEP3 Protein (His Tag)

Catalog Number:PKSH033229



Note: Centrifuge before opening to ensure complete recovery of vial contents.

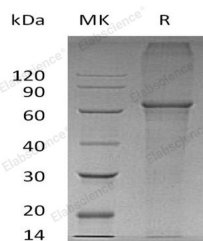
Description

| | |
|------------------------------------|---|
| Synonyms | Probable Xaa-Pro Aminopeptidase 3;X-Pro Aminopeptidase 3;Aminopeptidase P3;APP3;XPNPEP3 |
| Species | Human |
| Expression Host | E.coli |
| Sequence | Met 1-Ser507 |
| Accession | Q9NQH7 |
| Calculated Molecular Weight | 60.2 kDa |
| Observed molecular weight | 65 kDa |
| Tag | N-His & C-His |

Properties

| | |
|-----------------------|--|
| Purity | > 95 % as determined by reducing SDS-PAGE. |
| Endotoxin | < 1.0 EU per µg of the protein as determined by the LAL method. |
| Storage | Store at < -20°C, stable for 6 months. Please minimize freeze-thaw cycles. |
| Shipping | This product is provided as liquid. It is shipped at frozen temperature with blue ice/gel packs. Upon receipt, store it immediately at < - 20°C. |
| Formulation | Supplied as a 0.2 µm filtered solution of 25mM Tris, 1mM DTT, pH 7.3. |
| Reconstitution | Not Applicable |

Data



> 95 % as determined by reducing SDS-PAGE.

Background

Probable Xaa-Pro Aminopeptidase 3 (XPNPEP3) is a member of the peptidase M24B family. XPNPEP3 has two isoforms and both are widely expressed. XPNPEP3 is localized in the Mitochondrion. XPNPEP3 catalyzes the release of any N-terminal amino acid, including proline, that is linked to proline, even from a dipeptide or tripeptide. Defects in XPNPEP3 are the cause of nephronophthisis-like nephropathy type 1 which is a disorder with features of nephronophthisis, a cystic kidney disease leading to end-stage renal failure.

For Research Use Only

A Reliable Research Partner in Life Science and Medicine

Toll-free: 1-888-852-8623

Web: www.elabscience.com

Tel: 1-832-243-6086

Email: techsupport@elabscience.com

Fax: 1-832-243-6017