

Elab Fluor® Violet 450 Anti-Mouse CD22 Antibody[Cy34.1]

Catalog Number: E-AB-F1021UQ

Note: Centrifuge before opening to ensure complete recovery of vial contents.

Description

Reactivity	Mouse
Host	Mouse
Isotype	Mouse IgG1, κ
Clone No.	Cy34.1
Isotype Control	Elab Fluor® Violet 450 Mouse IgG1, κ Isotype Control[MOPC-21] [Product E-AB-F09793Q]
Conjugation	Elab Fluor® Violet 450
Conjugation Information	Elab Fluor® Violet 450 is designed to be excited by the violet laser (405 nm) and detected using an optical filter centered near 450 nm (e.g., a 450/45 nm bandpass filter).
Storage Buffer	Phosphate buffered solution, pH 7.2, containing 0.09% stabilizer and 1% protein protectant.

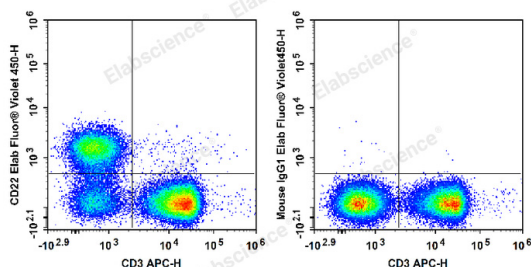
Applications

Recommended usage

FCM

Each lot of this antibody is quality control tested by flow cytometric analysis. Please check your vial before the experiment. Since applications vary, the appropriate dilutions must be determined for individual use. We suggest each investigator should titrate the reagent to obtain optimal results [The recommended concentration is 0.1-1 µg/10⁶ cells in 100 µL volume].

Data



C57BL/6 murine splenocytes are stained with APC Anti-

Mouse CD3 Antibody and Elab Fluor® Violet 450 Anti-Mouse CD22 Antibody (Left). Splenocytes are stained with APC

Anti-Mouse CD3 Antibody and Elab Fluor® Violet 450 Mouse IgG1, κ Isotype Control (Right).

Preparation & Storage

Storage	Keep as concentrated solution. This product can be stored at 2-8°C for 12 months. Please protected from prolonged exposure to light and do not freeze.
Shipping	Ice bag

Antigen Information

Alternate Names	Siglec2;B-cell receptor CD22;B-lymphocyte cell adhesion molecule;BL-CAM;CD22;CD22;Lyb-8;Sialic acid-binding Ig-like lectin 2;Siglec-2;T-cell surface antigen Leu-14
------------------------	---

For Research Use Only

Toll-free: 1-888-852-8623
Web: www.elabscience.com

Tel: 1-832-243-6086
Email: techsupport@elabscience.com

Fax: 1-832-243-6017

Rev. V1.7

Uniprot ID

P35329

Gene ID

12483

Background

The Cy34.1 monoclonal antibody specifically binds to the B-lymphocyte differentiation antigen CD22 on strains having the Lyb-8.2 alloantigen (e.g., A, BALB/c, CBA, C3H/He, C57BL, C57L, C58, SJL, SWR, but not AKR, DBA/1, DBA/2, NZB, PL). CD22 is expressed at high levels on mature peripheral B lymphocytes (follicular and marginal zone), B-1 cells (CD5+ B cells), and plasma cells. It is a member of the Ig gene superfamily and associates with the B-cell antigen receptor. Its sialic acid-binding immunoglobulin-like lectin (siglec) extracellular region mediates B-cell adhesion to ligands on endothelial cells in the bone marrow. Its intracellular domain is phosphorylated after cross-linking of antigen receptor or MHC class II antigen. It is involved in negative regulation of B-cell activation and protection from autoimmunity. B-cell proliferative responses to LPS or anti-mouse Ig μ chain are augmented in the presence of Cy34.1 mAb.

For Research Use Only

Toll-free: 1-888-852-8623
Web: www.elabscience.com

Tel: 1-832-243-6086
Email: techsupport@elabscience.com

Fax: 1-832-243-6017

Rev. V1.7