

# MT-CYB Polyclonal Antibody

Catalog Number: E-AB-93404



**Note:** Centrifuge before opening to ensure complete recovery of vial contents.

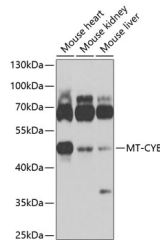
## Description

|                     |  |
|---------------------|--|
| <b>Reactivity</b>   | Human, Mouse, Rat                                  |
| <b>Immunogen</b>    | A synthetic peptide of mouse MT-CYB                |
| <b>Host</b>         | Rabbit   |
| <b>Isotype</b>      | IgG  |
| <b>Purification</b> | Affinity purification                              |
| <b>Conjugation</b>  | Unconjugated                                       |
| <b>Formulation</b>  | PBS with 0.02% sodium azide, 50% glycerol, pH 7.3. |

## Applications Recommended Dilution

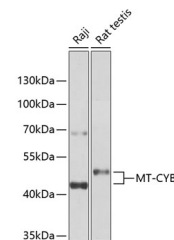
|           |              |
|-----------|--------------|
| <b>WB</b> | 1:200-1:1000 |
|-----------|--------------|

## Data



Western blot analysis of extracts of various cell lines using MT-CYB Polyclonal Antibody at 1:1000 dilution.

**Observed Mw: 43kDa**  
**Calculated Mw: 43kDa**



Western blot analysis of extracts of various cell lines using MT-CYB Polyclonal Antibody at 1:1000 dilution.

## Preparation & Storage

**Storage** Store at -20°C. Avoid freeze/thaw cycles.

## Background

Component of the ubiquinol-cytochrome c reductase complex (complex III or cytochrome b-c1 complex that is part of the mitochondrial respiratory chain. The b-c1 complex mediates electron transfer from ubiquinol to cytochrome c. Contributes to the generation of a proton gradient across the mitochondrial membrane that is then used for ATP synthesis.

## For Research Use Only

A Reliable Research Partner in Life Science and Medicine

Toll-free: 1-888-852-8623

Web: [www.elabscience.com](http://www.elabscience.com)

Tel: 1-832-243-6086

Email: [techsupport@elabscience.com](mailto:techsupport@elabscience.com)

Fax: 1-832-243-6017