

Recombinant CCR6 Monoclonal Antibody

catalog number: **AN301459L**

Note: Centrifuge before opening to ensure complete recovery of vial contents.

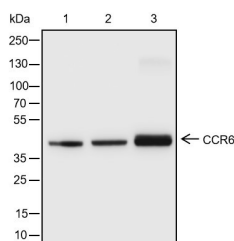
Description

Reactivity	Human;
Immunogen	Recombinant human CCR6 fragment
Host	Rabbit
Isotype	IgG, κ
Clone	A154
Purification	Protein A purified
Buffer	PBS, 50% glycerol, 0.05% Proclin 300, 0.05% protein protectant.

Applications

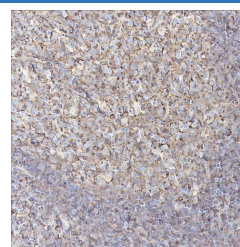
Applications	Recommended Dilution
WB	1:25000-1:50000
IHC	1:500-1:1000

Data



Western Blot with CCR6 Monoclonal Antibody at dilution of 1:50000. Lane 1: HeLa, Lane 2: Raji, Lane 3: HL-60

Observed-MW:42 kDa
Calculated-MW:42 kDa



Immunohistochemistry of paraffin-embedded Human tonsil using CCR6 Monoclonal Antibody at dilution of 1:1000.

Preparation & Storage

Storage	Store at -20°C Valid for 12 months. Avoid freeze / thaw cycles.
Shipping	Ice bag

Background

Receptor for the C-C type chemokine CCL20. Binds to CCL20 and subsequently transduces a signal by increasing the intracellular calcium ion levels. Although CCL20 is its major ligand it can also act as a receptor for non-chemokine ligands such as beta-defensins. Binds to defensin DEFB1 leading to increase in intracellular calcium ions and cAMP levels. Its binding to DEFB1 is essential for the function of DEFB1 in regulating sperm motility and bactericidal activity. Binds to defensins DEFB4 and DEFB4A/B and mediates their chemotactic effects. The ligand-receptor pair CCL20-CCR6 is responsible for the chemotaxis of dendritic cells (DC), effector/ memory T-cells and B-cells and plays an important role at skin and mucosal surfaces under homeostatic and inflammatory conditions, as well as in pathology, including cancer and various autoimmune diseases. CCR6-mediated signals are essential for immune responses to microbes in the intestinal mucosa and in the modulation of inflammatory responses initiated by tissue insult and trauma.

For Research Use Only