

# EpCAM Polyclonal Antibody

Catalog Number: E-AB-40300



**Note:** Centrifuge before opening to ensure complete recovery of vial contents.

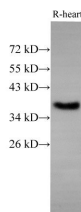
## Description

<b>Reactivity</b>	Human, Mouse, Rat
<b>Immunogen</b>	Recombinant Human SDHA protein expressed by E.coli
<b>Host</b>	Rabbit
<b>Isotype</b>	IgG
<b>Purification</b>	Antigen Affinity Purification
<b>Conjugation</b>	Unconjugated
<b>Formulation</b>	PBS with 0.05% Proclin300 and 50% glycerol, pH7.4.

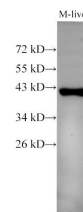
## Applications Recommended Dilution

<b>WB</b>	1:500-1:1000
<b>IHC</b>	300-1:700

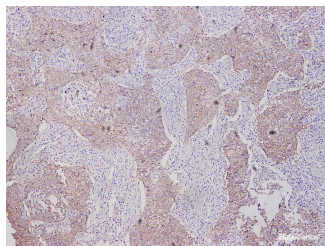
## Data



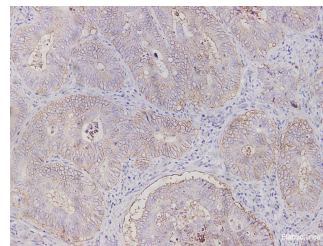
Western Blot analysis of Rat Heart using EpCAM Polyclonal Antibody at dilution of 1:500  
**Observed Mw: 35,40 kDa**  
**Calculated Mw: 35,40 kDa**



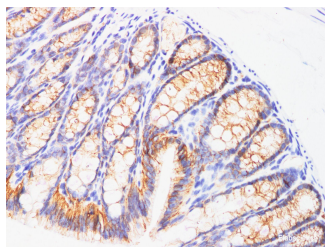
Western Blot analysis of Mouse liver using EpCAM Polyclonal Antibody at dilution of 1:500



Immunohistochemistry of paraffin-embedded Human lung cancer tissue using EpCAM Polyclonal Antibody at dilution of 1:700 (x100)



Immunohistochemistry of paraffin-embedded Human colon cancer tissue using EpCAM Polyclonal Antibody at dilution of 1:700 (x200)



Immunohistochemistry of paraffin-embedded Mouse

## For Research Use Only

A Reliable Research Partner in Life Science and Medicine

Toll-free: 1-888-852-8623

Web: [www.elabscience.com](http://www.elabscience.com)

Tel: 1-832-243-6086

Email: [techsupport@elabscience.com](mailto:techsupport@elabscience.com)

Fax: 1-832-243-6017

# EpCAM Polyclonal Antibody

Catalog Number: E-AB-40300



colon using EpCAM Polyclonal Antibody at dilution  
of 1:100

## Preparation & Storage

**Storage** Store at -20°C. Avoid freeze / thaw cycles.

## Background

Epithelial cell adhesion molecule (EpCAM, CD326) is a type I transmembrane glycoprotein that functions as a homophilic, epithelial-specific intercellular cell-adhesion molecule. In addition to cell adhesion, EpCAM is also involved in cellular signaling, cell migration, proliferation, and differentiation. EpCAM is highly expressed on most carcinomas and therefore of potential use as a diagnostic and prognostic marker for a variety of carcinomas, and has become a therapeutic target.

## For Research Use Only

A Reliable Research Partner in Life Science and Medicine

Toll-free: 1-888-852-8623

Tel: 1-832-243-6086

Fax: 1-832-243-6017

Web: [www.elabscience.com](http://www.elabscience.com)

Email: [techsupport@elabscience.com](mailto:techsupport@elabscience.com)