

# GLUT-1 Polyclonal Antibody

catalog number: E-AB-70090

**Note:** Centrifuge before opening to ensure complete recovery of vial contents.

## Description

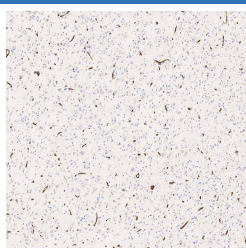
<b>Reactivity</b>	Human;Mouse;Rat
<b>Immunogen</b>	KLH conjugated Synthetic peptide corresponding to Mouse GLUT1
<b>Host</b>	Rabbit
<b>Isotype</b>	IgG
<b>Purification</b>	Affinity purification
<b>Conjugation</b>	Unconjugated
<b>buffer</b>	Phosphate buffered solution, pH 7.4, containing 0.05% stabilizer, 1% protein protectant and 50% glycerol.

## Applications

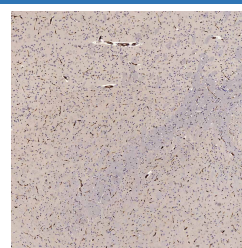
## Recommended Dilution

<b>IHC</b>	1:200-1:600
------------	-------------

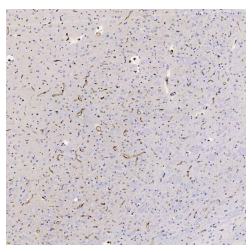
## Data



Immunohistochemistry analysis of paraffin-embedded human brain using GLUT-1 Polyclonal Antibody at dilution of 1:300.



Immunohistochemistry analysis of paraffin-embedded Mouse brain using GLUT-1 Polyclonal Antibody at dilution of 1:300.



Immunohistochemistry analysis of paraffin-embedded Rat brain using GLUT-1 Polyclonal Antibody at dilution of 1:300.

## Preparation & Storage

<b>Storage</b>	Store at -20°C Valid for 12 months. Avoid freeze / thaw cycles.
<b>Shipping</b>	The product is shipped with ice pack, upon receipt, store it immediately at the temperature recommended.

## Background

GLUT1, also known as SLC2A1, is an ubiquitously expressed glucose transporter and responsible for the basal level of glucose uptake in most cell types. Human erythrocytes express the highest level of the GLUT1. Defects in SLC2A1 are the cause of GLUT1 deficiency syndrome type 1 and type 2. High expression of GLUT1 has been reported to be a reliable immunohistochemical marker for juvenile hemangiomas. GLUT1 protein may appear as two or more distinct forms among 43 kDa to 55 kDa due to the different glycosylation state. And the conversion of highly glycosylated form of GLUT1 to less glycosylated form has been reported to correlate to differentiation. (8263524,23302780)

## For Research Use Only