

BCL-x Polyclonal Antibody

Catalog Number:E-AB-30640



Note: Centrifuge before opening to ensure complete recovery of vial contents.

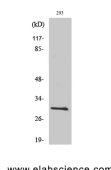
Description

Reactivity	Human,Mouse,Rat
Immunogen	Synthesized peptide derived from human Bcl-x around the non-phosphorylation site of Thr47.
Host	Rabbit
Isotype	IgG
Purification	Affinity purification
Conjugation	Unconjugated
Formulation	PBS with 0.02% sodium azide, 0.5% protective protein and 50% glycerol, pH7.4

Applications Recommended Dilution

WB	1:500-1:2000
IHC	1:100-1:300
IF	1:200-1:1000
ELISA	1:5000

Data



Western Blot analysis of 293T cells using Bcl-x
Polyclonal Antibody at dilution of 1:500.

Observed MW:30kDa
Calculated Mw:26kDa

Preparation & Storage

Storage Store at -20°C. Avoid freeze / thaw cycles.

Background

Bcl x is a member of the Bcl 2 family of proteins, which function as regulators of apoptosis. It may provide neuroprotection against ischemic brain injury. Bcl x has two isoforms, Bcl xl (long) a 241 amino acid protein and Bcl xs (short) a 178 amino acid protein lacking a 63 amino acid domain that is well conserved among members of the Bcl2 family. Isoform Bcl-X(L) anti-apoptotic activity is inhibited by association with SIVA isoform 1. Inhibits activation of caspases. Appears to regulate cell death by blocking the voltage-dependent anion channel (VDAC) by binding to it and preventing the release of the caspase activator, cytochrome c, from the mitochondrial membrane. The Bcl-X(S) isoform promotes apoptosis.

For Research Use Only

A Reliable Research Partner in Life Science and Medicine

Toll-free: 1-888-852-8623

Web: www.elabscience.com

Tel: 1-832-243-6086

Email: techsupport@elabscience.com

Fax: 1-832-243-6017