

## Recombinant Phospho-YAP1 (Ser127) Monoclonal Antibody

catalog number: **AN302080L**

**Note:** Centrifuge before opening to ensure complete recovery of vial contents.

### Description

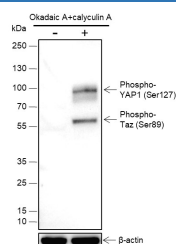
<b>Reactivity</b>	Human;
<b>Immunogen</b>	phosphorylated human YAP1 (Ser1270) peptide
<b>Host</b>	Rabbit
<b>Isotype</b>	IgG, $\kappa$
<b>Clone</b>	A804
<b>Purification</b>	Protein A purified
<b>Buffer</b>	PBS, 50% glycerol, 0.05% Proclin 300, 0.05% protein protectant.

### Applications

### Recommended Dilution

<b>WB</b>	1:500-1:2000
<b>IHC</b>	1:100-1:200
<b>IF</b>	1:50
<b>FCM</b>	1:50-1:100

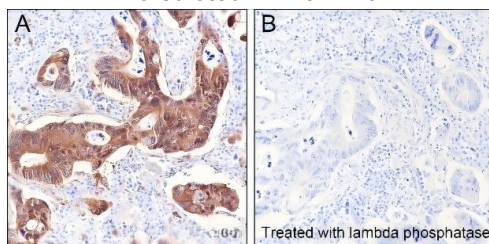
### Data



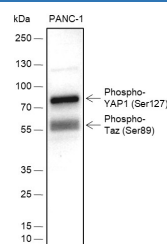
Western Blot with Phospho-YAP1 (Ser127) Monoclonal Antibody at dilution of 1:2000. (-): HeLa, (+): HeLa+Okadaic A+ calyculin A (100 nM, 60 min)

**Observed-MW:70-100 kDa**

**Calculated-MW:54 kDa**



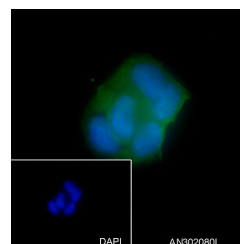
Immunohistochemistry of paraffin-embedded Human colon cancer using Phospho-YAP1 (Ser127) Monoclonal Antibody at dilution of 1:200.



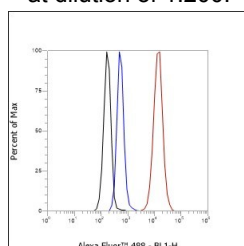
Western Blot with Phospho-YAP1 (Ser127) Monoclonal Antibody at dilution of 1:2000. Lane 1: PANC-1

**Observed-MW:70-100 kDa**

**Calculated-MW:54 kDa**



Immunofluorescent analysis of (4% Paraformaldehyde) fixed MCF-7 cells using anti-Phospho-YAP1 (Ser127) Monoclonal Antibody at dilution of 1:50.



### For Research Use Only

Toll-free: 1-888-852-8623  
Web: [www.elabscience.com](http://www.elabscience.com)

Tel: 1-832-243-6086  
Email: [techsupport@elabscience.com](mailto:techsupport@elabscience.com)

Fax: 1-832-243-6017

Rev. V1.0

Flow cytometric analysis of human Phospho-YAP1 (Ser127) expression on PANC-1 cells. Cells were stained with purified anti-Human Phospho-YAP1 (Ser127), then a Alexa Fluor 488-conjugated second step antibody. The histogram were derived from events with the forward and side light-scatter characteristics of intact cells.

## Preparation & Storage

<b>Storage</b>	Store at -20°C Valid for 12 months. Avoid freeze / thaw cycles.
<b>Shipping</b>	Ice bag

## Background

Transcriptional regulator which can act both as a coactivator and a corepressor and is the critical downstream regulatory target in the Hippo signaling pathway that plays a pivotal role in organ size control and tumor suppression by restricting proliferation and promoting apoptosis. The core of this pathway is composed of a kinase cascade wherein MST1/MST2, in complex with its regulatory protein SAV1, phosphorylates and activates LATS1/2 in complex with its regulatory protein MOB1, which in turn phosphorylates and inactivates YAP1 oncoprotein. Plays a key role to control cell proliferation in response to cell contact. Phosphorylation of YAP1 by LATS1/2 inhibits its translocation into the nucleus to regulate cellular genes important for cell proliferation, cell death, and cell migration.

## For Research Use Only