

SERINC4 Polyclonal Antibody

catalog number: E-AB-53330

Note: Centrifuge before opening to ensure complete recovery of vial contents.

Description

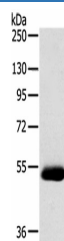
| | |
|---------------------|--|
| Reactivity | Human |
| Immunogen | Synthetic peptide of human SERINC4 |
| Host | Rabbit |
| Isotype | IgG |
| Purification | Antigen affinity purification |
| Conjugation | Unconjugated |
| buffer | Phosphate buffered solution, pH 7.4, containing 0.05% stabilizer and 50% glycerol. |

Applications

Recommended Dilution

| | |
|-----------|--------------|
| WB | 1:500-1:2000 |
|-----------|--------------|

Data



Western blot analysis of Human breast infiltrative duct tissue
using SERINC4 Polyclonal Antibody at dilution of 1:200

Observed-MV: Refer to figures

Calculated-MV: 57 kDa

Preparation & Storage

| | |
|-----------------|--|
| Storage | Store at -20°C Valid for 12 months. Avoid freeze / thaw cycles. |
| Shipping | The product is shipped with ice pack, upon receipt, store it immediately at the temperature recommended. |

Background

SERINC4 (serine incorporator 4) is a 518 amino acid multi-pass membrane protein that belongs to the TDE1 family. The SERINC4 protein incorporates a polar amino acid serine into membranes and facilitates the synthesis of two serine-derived lipids, phosphatidylserine and sphingolipids. Because SERINC proteins contain 11 transmembrane segments resembling amino acid transporters, SERINC4 may also function as an L-serine transporter by carrying serine molecules into the hydrophobic milieu of membrane lipid bilayers.

For Research Use Only