

Recombinant Human E-Cadherin/CDH1 Protein (Fc Tag)



Catalog Number:PKSH031764

Note: Centrifuge before opening to ensure complete recovery of vial contents.

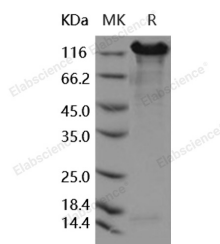
Description

Synonyms	Cadherin-1;CDH1;CAM 120/80;E-cadherin;CD324;CDHE;E-cad;E-Cadherin;ECAD;LCAM;UVO;Arc-1
Species	Human
Expression Host	HEK293 Cells
Sequence	Met 1-Ile707
Accession	P12830
Calculated Molecular Weight	87.1 kDa
Observed molecular weight	116-126 kDa
Tag	C-hFc
Bioactivity	Measured by the ability of the immobilized protein to support the adhesion of MCF-7 human breast adenocarcinoma cells. When cells are added to E-Cad coated plates (5 µg/mL, 100 µL/well), approximately 33% will adhere specifically after 90 minutes at 37 °C.

Properties

Purity	> 90 % as determined by reducing SDS-PAGE.
Endotoxin	< 1.0 EU per µg of the protein as determined by the LAL method.
Storage	Generally, lyophilized proteins are stable for up to 12 months when stored at -20 to -80°C. Reconstituted protein solution can be stored at 4-8°C for 2-7 days. Aliquots of reconstituted samples are stable at < -20°C for 3 months.
Shipping	This product is provided as lyophilized powder which is shipped with ice packs.
Formulation	Lyophilized from sterile PBS, pH 7.4 Normally 5 % - 8 % trehalose, mannitol and 0.01% Tween80 are added as protectants before lyophilization. Please refer to the specific buffer information in the printed manual.
Reconstitution	Please refer to the printed manual for detailed information.

Data



> 90 % as determined by reducing SDS-PAGE.

Background

Cadherins are calcium-dependent cell adhesion proteins which preferentially interact with themselves in a homophilic manner in connecting cells; and thus may contribute to the sorting of heterogeneous cell type. E-cadherin (E-Cad); also known as CDH1 and CD324; is a calcium-dependent cell adhesion molecule the intact function of which is crucial for the

For Research Use Only

A Reliable Research Partner in Life Science and Medicine

Toll-free: 1-888-852-8623

Web: www.elabscience.com

Tel: 1-832-243-6086

Email: techsupport@elabscience.com

Fax: 1-832-243-6017

Recombinant Human E-Cadherin/CDH1 Protein (Fc Tag)



Catalog Number:PKSH031764

establishment and maintenance of epithelial tissue polarity and structural integrity. Mutations in CDH1 occur in diffuse type gastric cancer; lobular breast cancer; and endometrial cancer. In human cancers; partial or complete loss of E-cadherin expression correlates with malignancy. During apoptosis or with calcium influx; E-Cad is cleaved by the metalloproteinase to produce fragments of about 38 kDa (E-CAD/CTF1); 33 kDa (E-CAD/CTF2) and 29 kDa (E-CAD/CTF3); respectively. E-Cad has been identified as a potent invasive suppressor; as downregulation of E-cadherin expression is involved in dysfunction of the cell-cell adhesion system; and often correlates with strong invasive potential and poor prognosis of human carcinomas.

For Research Use Only

A Reliable Research Partner in Life Science and Medicine

Toll-free: 1-888-852-8623

Web: www.elabscience.com

Tel: 1-832-243-6086

Email: techsupport@elabscience.com

Fax: 1-832-243-6017