

KIFC1 Polyclonal Antibody

Catalog Number: E-AB-67573



Note: Centrifuge before opening to ensure complete recovery of vial contents.

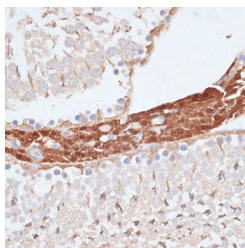
Description

Reactivity	Human, Mouse, Rat
Immunogen	Recombinant fusion protein of human KIFC1 (NP_002254.2).
Host	Rabbit
Isotype	IgG
Purification	Affinity purification
Conjugation	Unconjugated
Formulation	PBS with 0.02% sodium azide, 50% glycerol, pH7.3.

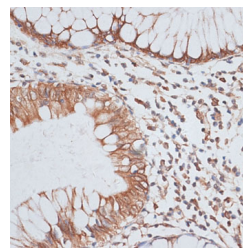
Applications Recommended Dilution

IHC	1:50-1:100
IF	1:50-1:100

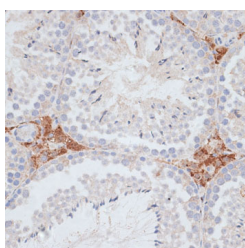
Data



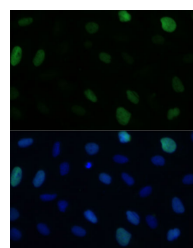
Immunohistochemistry of paraffin-embedded Rat testis using KIFC1 Polyclonal Antibody at dilution of 1:100 (40x lens).



Immunohistochemistry of paraffin-embedded Human colon carcinoma using KIFC1 Polyclonal Antibody at dilution of 1:100 (40x lens).



Immunohistochemistry of paraffin-embedded Mouse testis using KIFC1 Polyclonal Antibody at dilution of 1:100 (40x lens).



Immunofluorescence analysis of U-2 OS cells using KIFC1 Polyclonal Antibody at dilution of 1:100 (40x lens). Blue: DAPI for nuclear staining.

Preparation & Storage

Storage Store at -20°C. Avoid freeze / thaw cycles.

Background

KIFC1 (Kinesin Family Member C1) is a Protein Coding gene. Among its related pathways are Response to elevated platelet cytosolic Ca²⁺ and Golgi-to-ER retrograde transport. Gene Ontology (GO) annotations related to this gene include ATPase activity and microtubule motor activity. An important paralog of this gene is KIFC3.

For Research Use Only

A Reliable Research Partner in Life Science and Medicine

Toll-free: 1-888-852-8623

Web: www.elabscience.com

Tel: 1-832-243-6086

Email: techsupport@elabscience.com

Fax: 1-832-243-6017