

S100A6 Polyclonal Antibody

catalog number: **D-AB-10130L**

Note: Centrifuge before opening to ensure complete recovery of vial contents.

Description

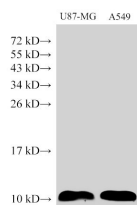
Reactivity	Human
Immunogen	Recombinant Human S100A6 protein expressed by E.coli
Host	Rabbit
Isotype	IgG
Purification	Antigen Affinity Purification
Buffer	PBS with 0.05% Proclin300, 1% protective protein and 50% glycerol, pH7.4

Applications

Recommended Dilution

WB	1:1000-1:3000
IHC	1:100-1:350

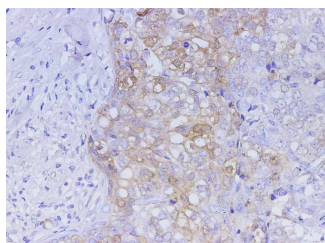
Data



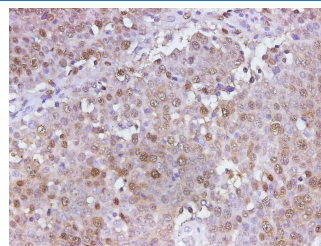
Western Blot analysis of U87-MG and A549 cells using S100A6 Polyclonal Antibody at dilution of 1:1500

Observed-MW:10 kDa

Calculated-MW:10 kDa



Immunohistochemistry of paraffin-embedded Human breast cancer using S100A6 Polyclonal Antibody at dilution of 1:350



Immunohistochemistry of paraffin-embedded Human ovary cancer using S100A6 Polyclonal Antibody at dilution of 1:350

Preparation & Storage

Storage	Store at -20°C Valid for 12 months. Avoid freeze / thaw cycles.
Shipping	The product is shipped with ice pack, upon receipt, store it immediately at the temperature recommended.

Background

The protein encoded by this gene is a member of the S100 family of proteins containing 2 EF-hand calcium-binding motifs. S100 proteins are localized in the cytoplasm and/or nucleus of a wide range of cells, and involved in the regulation of a number of cellular processes such as cell cycle progression and differentiation. S100 genes include at least 13 members which are located as a cluster on chromosome 1q21.

For Research Use Only

Toll-free: 1-888-852-8623
Web: www.elabscience.com

Tel: 1-832-243-6086
Email: techsupport@elabscience.com

Fax: 1-832-243-6017

Rev. V2.6