

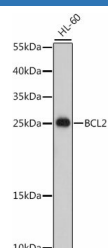
Bcl-2 Polyclonal Antibody

catalog number: E-AB-60012

Note: Centrifuge before opening to ensure complete recovery of vial contents.

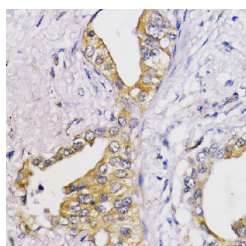
Description	
Reactivity	Human;Mouse;Rat
Immunogen	A synthetic peptide of human Bcl-2
Host	Rabbit
Isotype	IgG
Purification	Affinity purification
Conjugation	Unconjugated
Buffer	Phosphate buffered solution, pH 7.4, containing 0.05% stabilizer and 50% glycerol.
Applications	Recommended Dilution
WB	1:500-1:2000
IHC	1:50-1:100
IF	1:50-1:100

Data

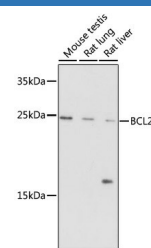
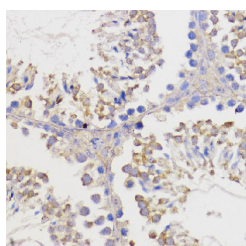


Western blot analysis of extracts of HL-60 cells using Bcl-2 Polyclonal Antibody at dilution of 1:500.

Observed-MW:24kDa/26 kDa
Calculated-MW:22 kDa/26 kDa

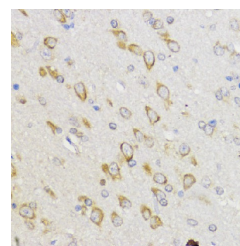


Immunohistochemistry of paraffin-embedded Human lung cancer using Bcl-2 Polyclonal Antibody at dilution of 1:100 (40x lens).

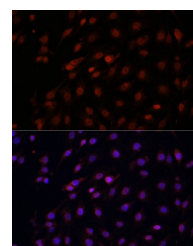


Western blot analysis of extracts of various cells using Bcl-2 Polyclonal Antibody at dilution of 1:1000.

Observed-MW:24kDa/26 kDa
Calculated-MW:22 kDa/26 kDa



Immunohistochemistry of paraffin-embedded Rat brain using Bcl-2 Polyclonal Antibody at dilution of 1:100 (40x lens).



For Research Use Only

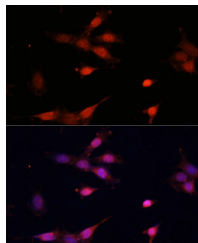
Tel: 400-999-2100

Web: www.elabscience.cn

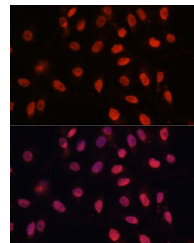
Email: techsupport@elabscience.cn

Rev. V1.9

Immunohistochemistry of paraffin-embedded Mouse testis using Bcl-2 Polyclonal Antibody at dilution of 1:100 (40x lens).



Immunofluorescence analysis of C6 cells using Bcl-2 Polyclonal Antibody at dilution of 1:100 (40x lens). Blue: DAPI for nuclear staining.



Immunofluorescence analysis of NIH-3T3 cells using Bcl-2 Polyclonal Antibody at dilution of 1:100 (40x lens). Blue: DAPI for nuclear staining.

Immunofluorescence analysis of U-2 OS cells using Bcl-2 Polyclonal Antibody at dilution of 1:100 (40x lens). Blue: DAPI for nuclear staining.

Preparation & Storage

Storage

Store at -20°C Valid for 12 months. Avoid freeze / thaw cycles.

Shipping

The product is shipped with ice pack, upon receipt, store it immediately at the temperature recommended.

Background

This gene encodes an integral outer mitochondrial membrane protein that blocks the apoptotic death of some cells such as lymphocytes. Constitutive expression of BCL2, such as in the case of translocation of BCL2 to Ig heavy chain locus, is thought to be the cause of follicular lymphoma. Alternative splicing results in multiple transcript variants.