

# LRPAP1 Polyclonal Antibody

Catalog Number: E-AB-12548



**Note:** Centrifuge before opening to ensure complete recovery of vial contents.

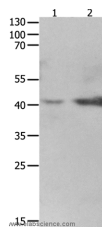
## Description

<b>Reactivity</b>	Human, Mouse, Rat
<b>Immunogen</b>	Synthetic peptide of human LRPAP1
<b>Host</b>	Rabbit
<b>Isotype</b>	IgG
<b>Purification</b>	Affinity purification
<b>Conjugation</b>	Unconjugated
<b>Formulation</b>	PBS with 0.05% sodium azide and 50% glycerol, PH7.4

## Applications Recommended Dilution

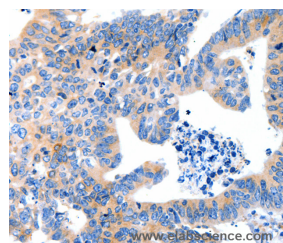
<b>WB</b>	1:500-1:2000
<b>IHC</b>	1:50-1:200

## Data



Western Blot analysis of 293T cell and fetal kidney tissue using LRPAP1 Polyclonal Antibody at dilution of 1:1600

**Calculated Mw: 41kDa**



Immunohistochemistry of paraffin-embedded Human colon cancer using LRPAP1 Polyclonal Antibody at dilution of 1:100

## Preparation & Storage

**Storage** Store at -20°C. Avoid freeze / thaw cycles.

## Background

Low density lipoprotein receptor-related protein associated protein 1 also known as LRPAP1 or RAP is a chaperone protein which in humans is encoded by the LRPAP1 gene. LRPAP1 is involved with trafficking of certain members of the LDL receptor family including LRP1 and LRP2. It is a glycoprotein that binds to the alpha-2-macroglobulin receptor, as well as to other members of the low density lipoprotein receptor family. It acts to inhibit the binding of all known ligands for these receptors, and may prevent receptor aggregation and degradation in the endoplasmic reticulum, thereby acting as a molecular chaperone. It may be under the regulatory control of calmodulin, since it is able to bind calmodulin and be phosphorylated by calmodulin-dependent kinase II.

## For Research Use Only

A Reliable Research Partner in Life Science and Medicine

Toll-free: 1-888-852-8623

Web: [www.elabscience.com](http://www.elabscience.com)

Tel: 1-832-243-6086

Email: [techsupport@elabscience.com](mailto:techsupport@elabscience.com)

Fax: 1-832-243-6017