

Recombinant Human GFAP Protein (His Tag)

Catalog Number: PKSH032490

Note: Centrifuge before opening to ensure complete recovery of vial contents.

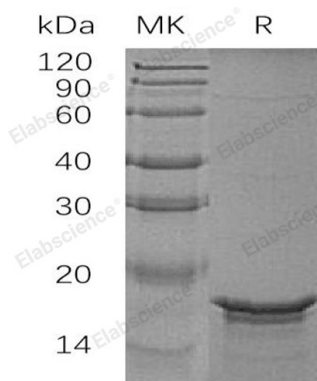
Description

Species	Human
Source	E.coli-derived Human GFAP protein Leu292-Met432, with an N-terminal His
Calculated MW	18.7 kDa
Observed MW	17 kDa
Accession	P14136
Bio-activity	Not validated for activity

Properties

Purity	> 95 % as determined by reducing SDS-PAGE.
Endotoxin	< 1.0 EU per µg of the protein as determined by the LAL method.
Storage	Generally, lyophilized proteins are stable for up to 12 months when stored at -20 to -80 °C. Reconstituted protein solution can be stored at 4-8°C for 2-7 days. Aliquots of reconstituted samples are stable at < -20°C for 3 months.
Shipping	This product is provided as lyophilized powder which is shipped with ice packs.
Formulation	Lyophilized from a 0.2 µm filtered solution of 20mM Tris-HCl, 10% Trehalose, 0.05% Tween 80, pH 8.5. Normally 5% - 8% trehalose, mannitol and 0.01% Tween 80 are added as protectants before lyophilization. Please refer to the specific buffer information in the printed manual.
Reconstitution	Please refer to the printed manual for detailed information.

Data



> 95 % as determined by reducing SDS-PAGE.

Background

Glial Fibrillary Acidic Protein (GFAP) is an intermediate filament (IF) protein which belongs to the intermediate filament family. GFAP is expressed in numerous cell types of the central nervous system (CNS), ependymal cells and phosphorylated by PKN1. GFAP, a class-III intermediate filament, is a cell-specific marker during the development of the central nervous system and distinguishes astrocytes from other glial cells. It is closely related to its non-epithelial family members, vimentin, desmin, and peripherin, which are all involved in the structure and function of the cell's cytoskeleton. GFAP is thought to help to maintain astrocyte mechanical strength, as well as the shape of cells but its exact function remains poorly understood.

For Research Use Only