

## FKBP8 Polyclonal Antibody

catalog number: **E-AB-15042**

**Note:** Centrifuge before opening to ensure complete recovery of vial contents.

### Description

|                     |  |
|---------------------|--|
| <b>Reactivity</b>   | Human;Mouse;Rat  |
| <b>Immunogen</b>    | Recombinant protein of human FKBP8   |
| <b>Host</b>         | Rabbit   |
| <b>Isotype</b>      | IgG  |
| <b>Purification</b> | Affinity purification  |
| <b>Buffer</b>       | Phosphate buffered solution, pH 7.4, containing 0.05% stabilizer and 50% glycerol. |

### Applications

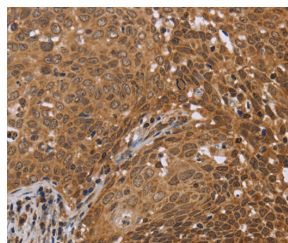
| Applications | Recommended Dilution |
|--------------|----------------------|
| <b>WB</b>    | 1:1000-1:5000        |
| <b>IHC</b>   | 1:100-1:300          |

### Data

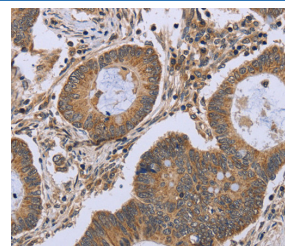


Western Blot analysis of Mouse liver tissue using FKBP8 Polyclonal Antibody at dilution of 1:1150

**Calculated-MW:45 kDa**



Immunohistochemistry of paraffin-embedded Human cervical cancer using FKBP8 Polyclonal Antibody at dilution of 1:50



Immunohistochemistry of paraffin-embedded Human colon cancer using FKBP8 Polyclonal Antibody at dilution of 1:50

### Preparation & Storage

|                 |  |
|-----------------|--|
| <b>Storage</b>  | Store at -20°C Valid for 12 months. Avoid freeze / thaw cycles.  |
| <b>Shipping</b> | The product is shipped with ice pack, upon receipt, store it immediately at the temperature recommended. |

### Background

The protein encoded by this gene is a member of the immunophilin protein family, which play a role in immunoregulation and basic cellular processes involving protein folding and trafficking. Unlike the other members of the family, this encoded protein does not seem to have PPIase/rotamase activity. It may have a role in neurons associated with memory function.

### For Research Use Only