

## Recombinant Human Hemopexin/HPX Protein (His Tag)

**Catalog Number:** PKSH033659

**Note:** Centrifuge before opening to ensure complete recovery of vial contents.

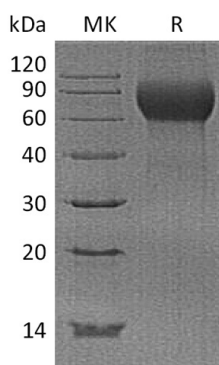
### Description

<b>Species</b>	Human
<b>Source</b>	HEK293 Cells-derived Human Hemopexin;HPX protein Thr24-His462, with an C-terminal His
<b>Calculated MW</b>	50.1 kDa
<b>Observed MW</b>	60-90 kDa
<b>Accession</b>	P02790
<b>Bio-activity</b>	Not validated for activity

### Properties

<b>Purity</b>	> 95 % as determined by reducing SDS-PAGE.
<b>Concentration</b>	Subject to label value.
<b>Endotoxin</b>	< 1.0 EU per µg of the protein as determined by the LAL method.
<b>Storage</b>	Store at < -20°C, stable for 6 months. Please minimize freeze-thaw cycles.
<b>Shipping</b>	This product is provided as liquid. It is shipped at frozen temperature with blue ice/gel packs. Upon receipt, store it immediately at < - 20°C.
<b>Formulation</b>	Supplied as a 0.2 µm filtered solution of 20mM MES, 150mM NaCl, pH 5.5.

### Data



> 95 % as determined by reducing SDS-PAGE.

### Background

Hemopexin (HPX) is plasma glycoprotein belongs to the family of the acute-phase proteins whose synthesis is induced after an inflammatory event. Hemopexin with two four-bladed beta -propeller folds has been found in other proteins including collagenases and provides sites for protein-protein interactions. The liver is the major synthesizing organ. Hemopexin participates in maintaining and recycling the iron pool by utilizing its high binding affinity toward heme composed of protoporphyrin IX and iron. It also functions in preventing oxidation caused by heme after hemolysis. Hydrophobic heme molecules can intercalate into lipid membranes and participate in the oxidation of lipid membrane components through the Fenton reaction resulting in lipid peroxidation. Hemopexin undergoes a conformational change upon the binding of heme. The conformational change allows hemopexin to interact with a specific receptor, forming a complex which is then internalized. Heme concentrations in plasma increase after hemolysis, which is associated with several pathological conditions such as reperfusion injury and ischemia.

### For Research Use Only