

Recombinant Phospho-eEF2 (Thr56) Monoclonal Antibody

catalog number: **AN300155L**

Note: Centrifuge before opening to ensure complete recovery of vial contents.

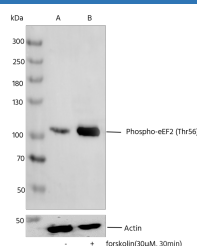
Description

Reactivity	Human
Immunogen	A synthetic peptide corresponding to the residues around (Thr56) of Human Phospho-eEF2
Host	Rabbit
Isotype	IgG
Clone	5B7
Purification	Protein A
Buffer	10 mM sodium HEPES, 150 mM NaCl, 100 µg/mL protein protectant, 50% glycerol, pH 7.5

Applications Recommended Dilution

WB	1:10000-1:100000
-----------	------------------

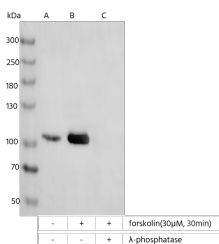
Data



Western blot analysis of extracts from serum-starved HepG2 , untreated(line A) or treated with forskolin(30µM, 30min)(line B), using Phospho-eEF2 (Thr56) Monoclonal Antibody at 1:10000 dilution (upper) or Anti-Actin Antibody, Chimeric Rabbit Monoclonal at 1:50000 dilution (lower).

Observed-MW:105 kDa

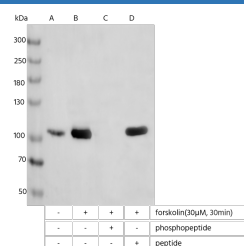
Calculated-MW:95 kDa



Western blot analysis of extracts from serum-starved HepG2, untreated (line A); treated with forskolin(30µM, 30min; +) (line B); treated with forskolin and λ-phosphatase (line C) using Phospho-eEF2 (Thr56) Monoclonal Antibody at 1:10000 dilution.

Observed-MW:105 kDa

Calculated-MW:95 kDa



Western blot analysis of extracts from serum-starved HepG2 , untreated (line A); treated with forskolin(30µM, 30min), without peptide (line B) or antigen-specific phosphopeptide (line C) or antigen-specific peptide (line D) using Phospho-eEF2 (Thr56) Monoclonal Antibody at 1:10000 dilution.

Observed-MW:105 kDa

Calculated-MW:95 kDa

For Research Use Only

Preparation & Storage

Storage

This antibody can be stored at 2°C-8°C for one month without detectable loss of activity. Antibody products are stable for twelve months from date of receipt when stored at -20°C to -80°C. Preservative-Free. Avoid repeated freeze-thaw cycles.

Shipping

Ice bag

Background

This gene encodes a member of the GTP-binding translation elongation factor family. This protein is an essential factor for protein synthesis. It promotes the GTP-dependent translocation of the nascent protein chain from the A-site to the P-site of the ribosome. This protein is completely inactivated by EF-2 kinase phosphorylation.

For Research Use Only

Toll-free: 1-888-852-8623

Web: www.elabscience.com

Tel: 1-832-243-6086

Email: techsupport@elabscience.com

Fax: 1-832-243-6017

Rev. V1.1