

# Recombinant Human UBE2T Protein (His Tag)

Catalog Number: PKSH033331



**Note:** Centrifuge before opening to ensure complete recovery of vial contents.

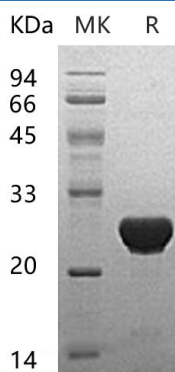
## Description

<b>Species</b>	Human
<b>Mol_Mass</b>	24.7 kDa
<b>Accession</b>	Q9NPD8
<b>Bio-activity</b>	Not validated for activity

## Properties

<b>Purity</b>	> 95 % as determined by reducing SDS-PAGE.
<b>Endotoxin</b>	< 1.0 EU per µg of the protein as determined by the LAL method.
<b>Storage</b>	Store at < -20°C, stable for 6 months. Please minimize freeze-thaw cycles.
<b>Shipping</b>	This product is provided as liquid. It is shipped at frozen temperature with blue ice/gel packs. Upon receipt, store it immediately at < - 20°C.
<b>Formulation</b>	Supplied as a 0.2 µm filtered solution of 50mM HEPES, 150mM NaCl, 2mM DTT, 10% Glycerol, pH 7.5.
<b>Reconstitution</b>	Not Applicable

## Data



> 95 % as determined by reducing SDS-PAGE.

## Background

Ubiquitin-Conjugating Enzyme E2 T (UBE2T) is a ligase that belongs to the Ubiquitin-Conjugating Enzyme family. UBE2T accepts the ATP-dependent ubiquitin from the E1 complex and catalyzes its covalent attachment to other proteins. In vitro; UBE2T is able to catalyze polyubiquitination using all 7 ubiquitin Lys residues; but may prefer 'Lys-11'; 'Lys-27'; 'Lys-48' and 'Lys-63'-linked polyubiquitination. UBE2T is an important factor of the Faconi anemia pathway of DNA damage repair and; upon self-inactivation; may negatively regulate the Faconi pathway.

## For Research Use Only

A Reliable Research Partner in Life Science and Medicine  
Tel:400-999-2100

Email:[techsupport@elabscience.cn](mailto:techsupport@elabscience.cn)

Web:[www.elabscience.cn](http://www.elabscience.cn)

Rev. V3.2