

## APC Anti-Mouse Ly6C Antibody[Monts 1]

Catalog Number: E-AB-F1121E

**Note:** Centrifuge before opening to ensure complete recovery of vial contents.

### Description

|                                |  |
|--------------------------------|--|
| <b>Reactivity</b>              | Mouse  |
| <b>Host</b>                    | Rat  |
| <b>Isotype</b>                 | Rat IgG2a, κ   |
| <b>Clone No.</b>               | Monts 1  |
| <b>Isotype Control</b>         | APC Rat IgG2a, κ Isotype Control[2A3] [Product E-AB-F09832E]   |
| <b>Conjugation</b>             | APC  |
| <b>Conjugation Information</b> | APC is designed to be excited by the Red (627-640 nm) laser and detected using an optical filter centered near 660 nm (e.g., a 660/20 nm bandpass filter). |
| <b>Storage Buffer</b>          | Phosphate buffered solution, pH 7.2, containing 0.09% sodium azide and 1% BSA.   |

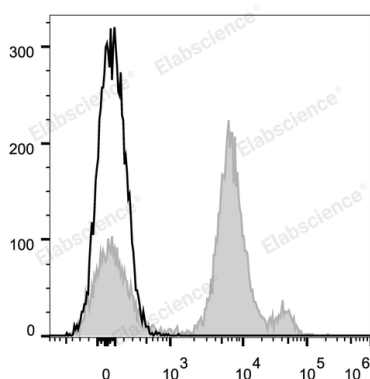
### Applications

### Recommended usage

#### FCM

Each lot of this antibody is quality control tested by flow cytometric analysis. **The amount of the reagent is suggested to be used 5 μL of antibody per test (million cells in 100 μL staining volume or per 100 μL of whole blood).** Please check your vial before the experiment. Since applications vary, the appropriate dilutions must be determined for individual use.

### Data



C57BL/6 murine bone marrow cells are stained with APC Anti-Mouse Ly6C Antibody (filled gray histogram). Unstained bone marrow cells (empty black histogram) are used as control.

### Preparation & Storage

|                 |   |
|-----------------|---|
| <b>Storage</b>  | Keep as concentrated solution.<br>This product can be stored at 2-8°C for 12 months. Please protected from prolonged exposure to light and do not freeze. |
| <b>Shipping</b> | Ice bag   |

### Antigen Information

|                        |   |
|------------------------|---|
| <b>Alternate Names</b> | locus C;Ly6C;Ly6c1;Ly6c2;Lymphocyte antigen 6 complex |
| <b>Uniprot ID</b>      | P0CW03  |
| <b>Gene ID</b>         | 17067   |

### For Research Use Only

## Background

Most hematopoietic cells express one or more members of Ly-6 family. The expression of Ly-6 varies with development stage and activation. Ly-6C is a 14-17 kD GPI-linked surface protein expressed on mouse monocyte/macrophage cells, endothelial cells, neutrophils, and some T cell subsets. Ly-6C is reported to be an indicator of memory CD8+ T cells.