

# PHLDA3 Polyclonal Antibody

Catalog Number: E-AB-19111



**Note:** Centrifuge before opening to ensure complete recovery of vial contents.

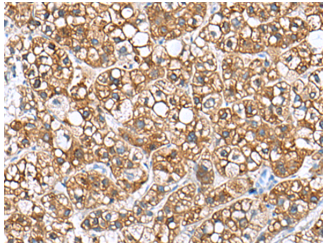
## Description

|                     |   |
|---------------------|---|
| <b>Reactivity</b>   | Human, Mouse, Rat                           |
| <b>Immunogen</b>    | Fusion protein of human PHLDA3              |
| <b>Host</b>         | Rabbit                                      |
| <b>Isotype</b>      | IgG   |
| <b>Purification</b> | Antigen affinity purification               |
| <b>Conjugation</b>  | Unconjugated                                |
| <b>Formulation</b>  | PBS with 0.05% NaN3 and 40% Glycerol, pH7.4 |

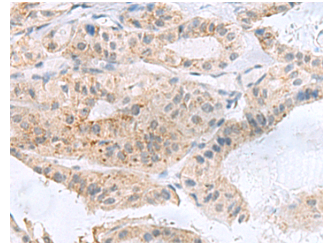
## Applications Recommended Dilution

|              |                |
|--------------|----------------|
| <b>IHC</b>   | 1:100-1:300    |
| <b>ELISA</b> | 1:5000-1:10000 |

## Data



Immunohistochemistry of paraffin-embedded Human liver cancer tissue using PHLDA3 Polyclonal Antibody at dilution of 1:110(×200)



Immunohistochemistry of paraffin-embedded Human thyroid cancer tissue using PHLDA3 Polyclonal Antibody at dilution of 1:110(×200)

## Preparation & Storage

**Storage** Store at -20°C. Avoid freeze / thaw cycles.

## Background

PHLDA3 (Pleckstrin Homology Like Domain Family A Member 3) is a Protein Coding gene. Among its related pathways are Apoptosis and Autophagy and PI3K / Akt Signaling. GO annotations related to this gene include phosphatidylinositol-4,5-bisphosphate binding and phosphatidylinositol-3-phosphate binding. An important paralog of this gene is PHLDA1.

## For Research Use Only

A Reliable Research Partner in Life Science and Medicine

Toll-free: 1-888-852-8623

Web: [www.elabscience.com](http://www.elabscience.com)

Tel: 1-832-243-6086

Email: [techsupport@elabscience.com](mailto:techsupport@elabscience.com)

Fax: 1-832-243-6017