

SLCO1C1 Polyclonal Antibody

catalog number: E-AB-92948

Note: Centrifuge before opening to ensure complete recovery of vial contents.

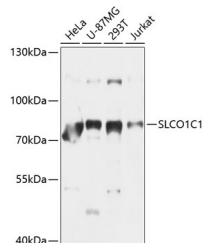
Description

Reactivity	Human
Immunogen	Recombinant fusion protein of human SLCO1C1
Host	Rabbit
Isotype	IgG
Purification	Affinity purification
Buffer	Phosphate buffered solution, pH 7.4, containing 0.05% stabilizer and 50% glycerol.

Applications

WB	1:200-1:2000
-----------	--------------

Data



Western blot analysis of extracts of various cell lines using SLCO1C1 Polyclonal Antibody at 1:1000 dilution.

Observed-MV:78 kDa

Calculated-MV:67 kDa/73 kDa/78 kDa/80 kDa

Preparation & Storage

Storage	Store at -20°C Valid for 12 months. Avoid freeze / thaw cycles.
Shipping	The product is shipped with ice pack, upon receipt, store it immediately at the temperature recommended.

Background

This gene encodes a member of the organic anion transporter family. The encoded protein is a transmembrane receptor that mediates the sodium-independent uptake of thyroid hormones in brain tissues. This protein has particularly high affinity for the thyroid hormones thyroxine, tri-iodothyronine and reverse tri-iodothyronine. Polymorphisms in the gene encoding this protein may be associated with fatigue and depression in patients suffering from hyperthyroidism. Alternative splicing results in multiple transcript variants.

For Research Use Only