

## AMZ1 Polyclonal Antibody

catalog number: E-AB-16176

**Note:** Centrifuge before opening to ensure complete recovery of vial contents.

### Description

<b>Reactivity</b>	Human
<b>Immunogen</b>	Synthetic peptide of human AMZ1
<b>Host</b>	Rabbit
<b>Isotype</b>	IgG
<b>Purification</b>	Affinity purification
<b>Conjugation</b>	Unconjugated
<b>Buffer</b>	Phosphate buffered solution, pH 7.4, containing 0.05% stabilizer and 50% glycerol.

### Applications

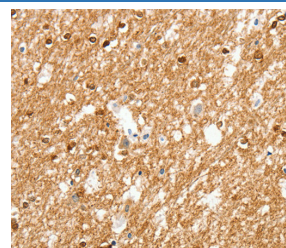
### Recommended Dilution

<b>WB</b>	1:500-1:2000
<b>IHC</b>	1:50-1:200

### Data



Western Blot analysis of Human fetal brain and liver tissue using AMZ1 Polyclonal Antibody at dilution of 1:1000



Immunohistochemistry of paraffin-embedded Human brain using AMZ1 Polyclonal Antibody at dilution of 1:80

**Calculated-MW:55 kDa**

### Preparation & Storage

<b>Storage</b>	Store at -20°C Valid for 12 months. Avoid freeze / thaw cycles.
<b>Shipping</b>	The product is shipped with ice pack, upon receipt, store it immediately at the temperature recommended.

### Background

AMZ1 shares sequence similarity with archaeal metalloproteases called archaemetzincins, but it appears to act predominantly as a basic aminopeptidase. Inhibited by the general metalloprotease inhibitors o-phenanthroline and batimastat. Also significantly inhibited by amastatin, which is an inhibitor of aminopeptidases. Not inhibited by 4-(2-aminoethyl)-benzenesulfonyl fluoride, E-64, and TIMPS (tissue inhibitors of metalloproteinases), which are inhibitors of serine, cysteine, and matrix metalloproteases, respectively.

### For Research Use Only