

ATP2C1 Polyclonal Antibody

catalog number: E-AB-14777

Note: Centrifuge before opening to ensure complete recovery of vial contents.

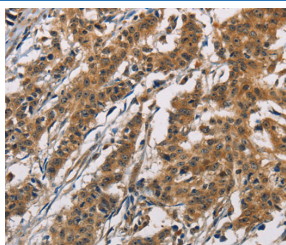
Description

| | |
|---------------------|--|
| Reactivity | Human;Mouse;Rat |
| Immunogen | Recombinant protein of human ATP2C1 |
| Host | Rabbit |
| Isotype | IgG |
| Purification | Affinity purification |
| Buffer | Phosphate buffered solution, pH 7.4, containing 0.05% stabilizer and 50% glycerol. |

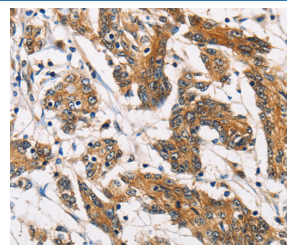
Applications

| Applications | Recommended Dilution |
|--------------|----------------------|
| IHC | 1:50-1:200 |

Data



Immunohistochemistry of paraffin-embedded Human gastric cancer tissue using ATP2C1 Polyclonal Antibody at dilution 1:60



Immunohistochemistry of paraffin-embedded Human colon cancer tissue using ATP2C1 Polyclonal Antibody at dilution 1:60

Preparation & Storage

| | |
|-----------------|--|
| Storage | Store at -20°C Valid for 12 months. Avoid freeze / thaw cycles. |
| Shipping | The product is shipped with ice pack, upon receipt, store it immediately at the temperature recommended. |

Background

The protein encoded by this gene belongs to the family of P-type cation transport ATPases. This magnesium-dependent enzyme catalyzes the hydrolysis of ATP coupled with the transport of calcium ions. Defects in this gene cause Hailey-Hailey disease, an autosomal dominant disorder. Alternatively spliced transcript variants encoding different isoforms have been identified.

For Research Use Only