

PerCP Anti-Mouse CD3 Antibody[17A2]

Catalog Number: E-AB-F1013F

Note: Centrifuge before opening to ensure complete recovery of vial contents.

Description

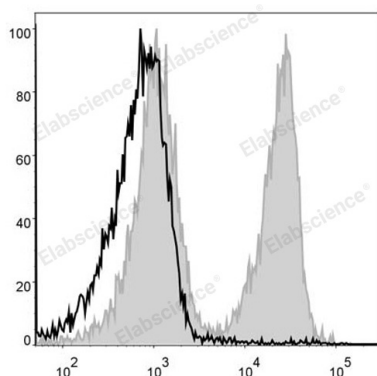
Reactivity	Mouse
Host	Rat
Isotype	Rat IgG2b, κ
Clone No.	17A2
Isotype Control	PerCP Rat IgG2b, κ Isotype Control[LTF-2] [Product E-AB-F09842F]
Conjugation	PerCP
Conjugation Information	PerCP is designed to be excited by the blue laser (488 nm) and detected using an optical filter centered near 675 nm (e.g., a 690/50 nm bandpass filter).
Storage Buffer	Phosphate buffered solution, pH 7.2, containing 0.09% stabilizer and 1% protein protectant.

Applications

Recommended usage

FCM	Each lot of this antibody is quality control tested by flow cytometric analysis. The amount of the reagent is suggested to be used 5 μL of antibody per test (million cells in 100 μL staining volume or per 100 μL of whole blood). Please check your vial before the experiment. Since applications vary, the appropriate dilutions must be determined for individual use.
------------	--

Data



C57BL/6 murine splenocytes are stained with PerCP Anti-Mouse CD3 Antibody (filled gray histogram). Unstained splenocytes (empty black histogram) are used as control.

Preparation & Storage

Storage	Keep as concentrated solution. This product can be stored at 2-8°C for 12 months. Please protected from prolonged exposure to light and do not freeze.
Shipping	Ice bag

Antigen Information

Alternate Names	CD3;CD3E/D/G/Z;CD3e/d/g/z;T-cell surface glycoprotein CD 3epsilon/delta/gamma/zeta chain
Uniprot ID	P04235;P11942;P22646;P24161
Gene ID	12502

For Research Use Only

Background

CD3, also known as T3, is a member of the Ig superfamily and primarily expressed on T cells, NK-T cells, and at different levels on thymocytes during T cell differentiation. CD3 is composed of CD3 ϵ , δ , γ and ζ chains. It forms a TCR complex by associating with TCR α/β or γ/δ chains. CD3 plays a critical role in TCR signal transduction, T cell activation, and antigen recognition by binding the peptide/MHC antigen complex.

For Research Use Only