

MAP3K11 Polyclonal Antibody

Catalog Number: E-AB-16612



Note: Centrifuge before opening to ensure complete recovery of vial contents.

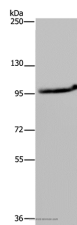
Description

Reactivity	Human, Mouse, Rat
Immunogen	Synthetic peptide of human MAP3K11
Host	Rabbit
Isotype	IgG
Purification	Affinity purification
Conjugation	Unconjugated
Formulation	PBS with 0.05% sodium azide and 50% glycerol, PH7.4

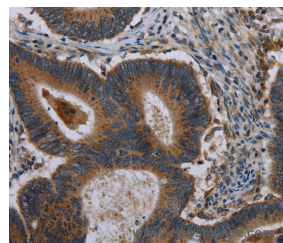
Applications Recommended Dilution

WB	1:500-1:2000
IHC	1:50-1:200

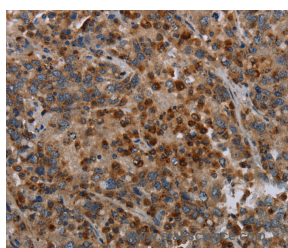
Data



Western Blot analysis of LO2 cell using MAP3K11 Polyclonal Antibody at dilution of 1:400
Calculated Mw:93kDa



Immunohistochemistry of paraffin-embedded Human colon cancer using MAP3K11 Polyclonal Antibody at dilution of 1:40



Immunohistochemistry of paraffin-embedded Human liver cancer using MAP3K11 Polyclonal Antibody at dilution of 1:40

Preparation & Storage

Storage Store at -20°C. Avoid freeze / thaw cycles.

Background

The protein encoded by this gene is a member of the serine/threonine kinase family. This kinase contains a SH3 domain and a leucine zipper-basic motif. This kinase preferentially activates MAPK8/JNK kinase, and functions as a positive regulator of JNK signaling pathway. This kinase can directly phosphorylate, and activates I κ B kinase alpha and beta, and is found to be involved in the transcription activity of NF- κ B mediated by Rho family GTPases and CDC42.

For Research Use Only

A Reliable Research Partner in Life Science and Medicine

Toll-free: 1-888-852-8623

Web: www.elabscience.com

Tel: 1-832-243-6086

Email: techsupport@elabscience.com

Fax: 1-832-243-6017