

Recombinant Human CDK16/PCTAIRE1/PCTK1 Protein (GST Tag)

Catalog Number: PKSH030404

Note: Centrifuge before opening to ensure complete recovery of vial contents.

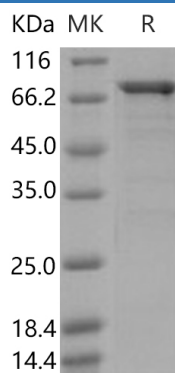
Description

| | |
|----------------------|---|
| Species | Human |
| Source | Baculovirus-Insect Cells-derived Human CDK16/PCTAIRE1/PCTK1 protein Met 1-Phe 496, with an N-terminal GST |
| Calculated MW | 82.0 kDa |
| Observed MW | 73 kDa |
| Accession | Q00536-1 |
| Bio-activity | Measured by its ability to bind biotinylated human GST-EK-YWHAH in a functional ELISA. |

Properties

| | |
|----------------------|--|
| Purity | > 82 % as determined by reducing SDS-PAGE. |
| Concentration | Subject to label value. |
| Endotoxin | < 1.0 EU per µg of the protein as determined by the LAL method. |
| Storage | Store at < -20°C, stable for 6 months. Please minimize freeze-thaw cycles. |
| Shipping | This product is provided as liquid. It is shipped at frozen temperature with blue ice/gel packs. Upon receipt, store it immediately at < - 20°C. |
| Formulation | Supplied as sterile solution of 20mM Tris, 500mM NaCl, pH 7.4, 2mM GSH, 0.5mM PMSF |

Data



> 82 % as determined by reducing SDS-PAGE.

Background

The protein encoded by this gene belongs to the cdc2/cdkx subfamily of the ser/thr family of protein kinases. It may play a role in signal transduction cascades in terminally differentiated cells; in exocytosis; and in transport of secretory cargo from the endoplasmic reticulum. This gene is thought to escape X inactivation. Alternative splicing results in multiple transcript variants encoding different isoforms.

For Research Use Only