

## GFP Monoclonal Antibody

catalog number: **E-AB-48043**

**Note:** Centrifuge before opening to ensure complete recovery of vial contents.

### Description

<b>Reactivity</b>	All
<b>Immunogen</b>	Recombinant GFP protein expressed by E.coli
<b>Host</b>	Mouse
<b>Isotype</b>	IgG2a
<b>Clone</b>	2A7
<b>Purification</b>	Protein A/G Purification
<b>Buffer</b>	PBS with 0.05% Proclin300, 1% protective protein and 50% glycerol, pH7.4

### Applications

### Recommended Dilution

<b>WB</b>	1:100000-200000
<b>IF</b>	1:8000-16000
<b>IP</b>	3ug/sample

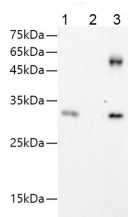
### Data



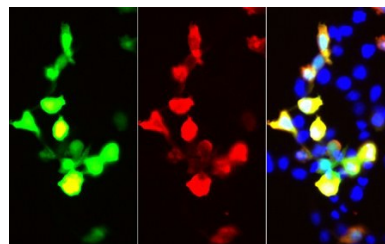
Western blot of GFP protein with anti-GFP at dilution of 1:50000, 1:100000, 200000. Lane 1: 293F cells transfected with GFP-Tag fusion protein, lane 2: 293F cells transfected with GFP-Tag fusion protein, Lane 3: 293F cells transfected with GFP-Tag fusion protein

**Observed-MW:32 kDa**

**Calculated-MW:32 kDa**



IP Result of 293F cells transfected with GFP-Tag fusion protein, using anti-GFP-Tag mouse monoclonal antibody. Lane 1: input, lane 2: mouse IgG2a Isotype Control, Lane 3: anti-GFP-Tag monoclonal antibody



Immunofluorescent analysis of 293F cells transfected with the FLAG-GFP, using anti-GFP-Tag Monoclonal Antibody at dilution of 1:50000.

### Preparation & Storage

**Storage** Store at -20°C Valid for 12 months. Avoid freeze / thaw cycles.

### For Research Use Only

**Shipping**

The product is shipped with ice pack, upon receipt, store it immediately at the temperature recommended.

**Background**

The green fluorescent protein (GFP) is a protein that exhibits bright green fluorescence when exposed to light in the blue to ultraviolet range. It is first isolated from the jellyfish *Aequorea victoria* and is frequently used as a reporter of expression. GFP is widely used in gene expression, tracing and protein subcellular localization.