

## CSNK1A1 Polyclonal Antibody

**catalog number: E-AB-66730**

**Note:** Centrifuge before opening to ensure complete recovery of vial contents.

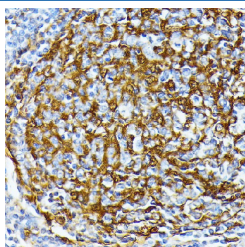
### Description

<b>Reactivity</b>	Human;Mouse;Rat
<b>Immunogen</b>	A synthetic peptide of human CSNK1A1 (NP_001020276.1).
<b>Host</b>	Rabbit
<b>Isotype</b>	IgG
<b>Purification</b>	Affinity purification
<b>Buffer</b>	Phosphate buffered solution, pH 7.4, containing 0.05% stabilizer and 50% glycerol.

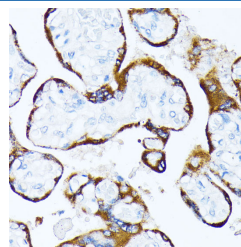
### Applications

Applications	Recommended Dilution
IHC	1:50-1:200

### Data



Immunohistochemistry of paraffin-embedded Human tonsil using CSNK1A1 Polyclonal Antibody at dilution of 1:100 (40x lens).



Immunohistochemistry of paraffin-embedded Human placenta using CSNK1A1 Polyclonal Antibody at dilution of 1:100 (40x lens).

### Preparation & Storage

<b>Storage</b>	Store at -20°C Valid for 12 months. Avoid freeze / thaw cycles.
<b>Shipping</b>	The product is shipped with ice pack, upon receipt, store it immediately at the temperature recommended.

### Background

CSNK1A1 (Casein Kinase 1 Alpha 1) is a Protein Coding gene. Diseases associated with CSNK1A1 include Enterobiasis and Gastric Cancer. Among its related pathways are Signaling by GPCR and S45 mutants of beta-catenin are not phosphorylated. Gene Ontology (GO) annotations related to this gene include transferase activity, transferring phosphorus-containing groups and protein tyrosine kinase activity. An important paralog of this gene is CSNK1A1L.

### For Research Use Only