

Recombinant GOSR1/GS28 Monoclonal Antibody

catalog number: **AN301536L**

Note: Centrifuge before opening to ensure complete recovery of vial contents.

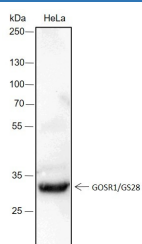
Description

Reactivity	Human;Mouse
Immunogen	Recombinant human GOSR1/GS28 fragment
Host	Rabbit
Isotype	IgG, κ
Clone	A235
Purification	Protein A purified
Buffer	PBS, 50% glycerol, 0.05% Proclin 300, 0.05% protein protectant.

Applications Recommended Dilution

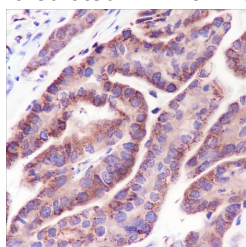
WB	1:500-1:2000
IHC	1:50-1:100
IF	1:50
FCM	1:50-1:100

Data

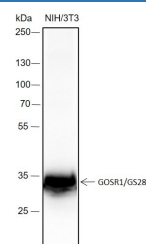


Western Blot with GOSR1/GS28 Monoclonal Antibody at dilution of 1:2000. Lane 1: HeLa

Observed-MW:29 kDa
Calculated-MW:29 kDa

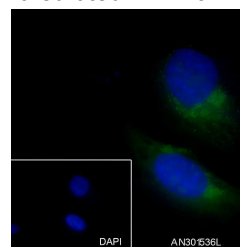


Immunohistochemistry of paraffin-embedded Human gastric cancer using GOSR1/GS28 Monoclonal Antibody at dilution of 1:100.

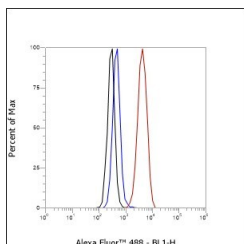


Western Blot with GOSR1/GS28 Monoclonal Antibody at dilution of 1:2000. Lane 1: NIH/3T3

Observed-MW:29 kDa
Calculated-MW:29 kDa



dilution of 1:50.



For Research Use Only

Toll-free: 1-888-852-8623
Web: www.elabscience.com

Tel: 1-832-243-6086
Email: techsupport@elabscience.com

Fax: 1-832-243-6017

Rev. V1.0

Flow cytometric analysis of human GOSR1/GS28 expression on HeLa cells. Cells were stained with purified anti-Human GOSR1/GS28, then a Alexa Fluor 488-conjugated second step antibody. The histogram were derived from events with the forward and side light-scatter characteristics of intact cells.

Preparation & Storage

Storage	Store at -20°C Valid for 12 months. Avoid freeze / thaw cycles.
Shipping	Ice bag

Background

Involved in transport from the ER to the Golgi apparatus as well as in intra-Golgi transport. It belongs to a super-family of proteins called t-SNAREs or soluble NSF (N-ethylmaleimide-sensitive factor) attachment protein receptor. May play a protective role against hydrogen peroxide induced cytotoxicity under glutathione depleted conditions in neuronal cells by regulating the intracellular ROS levels via inhibition of p38 MAPK (MAPK11, MAPK12, MAPK13 and MAPK14). Participates in docking and fusion stage of ER to cis-Golgi transport. Plays an important physiological role in VLDL-transport vesicle-Golgi fusion and thus in VLDL delivery to the hepatic cis-Golgi.

For Research Use Only