

## Recombinant Human Nectin-4/NECTIN4 Protein (His Tag)

**Catalog Number:** PKSH032790

**Note:** Centrifuge before opening to ensure complete recovery of vial contents.

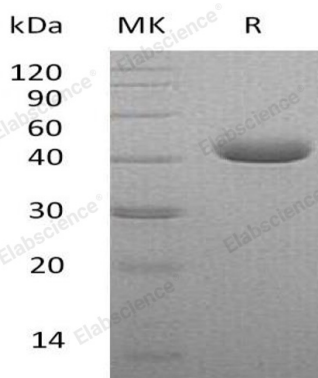
### Description

<b>Species</b>	Human
<b>Source</b>	HEK293 Cells-derived Human Nectin-4;NECTIN4 protein Gly32-Val351, with an C-terminal His
<b>Calculated MW</b>	35.3 kDa
<b>Observed MW</b>	40-47 kDa
<b>Accession</b>	Q96NY8
<b>Bio-activity</b>	Immobilized Anti-Human Nectin-4 mAb-mFc at 2µg/ml (100 µl/well) can bind Human Nectin-4-His.The ED <sub>50</sub> of Human Nectin-4-His is 16.29 ng/ml.

### Properties

<b>Purity</b>	> 95 % as determined by reducing SDS-PAGE.
<b>Endotoxin</b>	< 1.0 EU per µg of the protein as determined by the LAL method.
<b>Storage</b>	Generally, lyophilized proteins are stable for up to 12 months when stored at -20 to -80 °C. Reconstituted protein solution can be stored at 4-8°C for 2-7 days. Aliquots of reconstituted samples are stable at < -20°C for 3 months.
<b>Shipping</b>	This product is provided as lyophilized powder which is shipped with ice packs.
<b>Formulation</b>	Lyophilized from a 0.2 µm filtered solution of 20mM Tris-HCl, 8% Sucrose, 0.05% Tween 80, pH 8.0. Normally 5% - 8% trehalose, mannitol and 0.01% Tween 80 are added as protectants before lyophilization. Please refer to the specific buffer information in the printed manual.
<b>Reconstitution</b>	Please refer to the printed manual for detailed information.

### Data



> 95 % as determined by reducing SDS-PAGE.

### Background

### For Research Use Only

Toll-free: 1-888-852-8623  
Web: [www.elabscience.com](http://www.elabscience.com)

Tel: 1-832-243-6086  
Email: [techsupport@elabscience.com](mailto:techsupport@elabscience.com)

Fax: 1-832-243-6017

Nectin-4 (PVRL4) is a type I transmembrane glycoprotein which belongs to the nectin family of Ig superfamily proteins. It contains two Ig-like C2-type domains and one Ig-like V-type domain. PVRL4 seems to be involved in cell adhesion through trans-homophilic and -heterophilic interactions, the latter including specifically interactions with nectin-1. It does not act as receptor for alpha-herpesvirus entry into cells. It is predominantly expressed in placenta, the embryo and breast carcinoma. But it is not detected in normal breast epithelium. The soluble form is produced by proteolytic cleavage at the cell surface (shedding), probably by ADAM17. Mutations in this gene are the cause of ectodermal dysplasia-syndactyly syndrome type 1, an autosomal recessive disorder.