

## Elab Fluor® 647 Anti-Rat CD8b Antibody[341]

Catalog Number: AN00667M

**Note:** Centrifuge before opening to ensure complete recovery of vial contents.

### Description

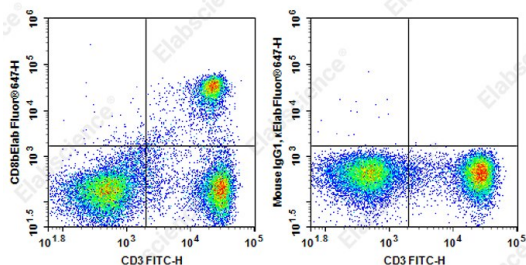
<b>Reactivity</b>	Rat
<b>Host</b>	Mouse
<b>Isotype</b>	Mouse IgG1, κ
<b>Clone No.</b>	341
<b>Isotype Control</b>	Elab Fluor® 647 Mouse IgG1, κ Isotype Control[MOPC-21] [Product E-AB-F09792M]
<b>Conjugation</b>	Elab Fluor® 647
<b>Conjugation Information</b>	Elab Fluor® 647 is designed to be excited by the Red laser (627-640 nm) and detected using an optical filter centered near 670 nm (e.g., a 660/20 nm bandpass filter).
<b>Storage Buffer</b>	Phosphate buffered solution, pH 7.2, containing 0.09% stabilizer.

### Applications

### Recommended usage

<b>FCM</b>	Each lot of this antibody is quality control tested by flow cytometric analysis. <b>The amount of the reagent is suggested to be used 5 μL of antibody per test (million cells in 100 μL staining volume or per 100 μL of whole blood).</b> Please check your vial before the experiment. Since applications vary, the appropriate dilutions must be determined for individual use.
------------	---

### Data



Staining of Rat splenocytes cells with FITC Anti-Human CD3

Antibody and Elab Fluor® 647 Anti-Rat CD8b Antibody[341]

(left) or Elab Fluor® 647 Mouse IgG1, κ Isotype Control (right). Total viable cells were used for analysis.

### Preparation & Storage

<b>Storage</b>	Keep as concentrated solution. This product can be stored at 2-8°C for 24 months. Please protected from prolonged exposure to light and do not freeze.
<b>Shipping</b>	Ice bag

### Antigen Information

<b>Alternate Names</b>	CD8;Lyt3
<b>Uniprot ID</b>	P05541
<b>Gene ID</b>	24931

### For Research Use Only

## Background

CD8b antigen is also known as T8, Lyt2, Ly-2, and CD8 $\beta$ . It is a member of the immunoglobulin superfamily expressed on most thymocytes, some mature T cell subsets, and macrophages. CD8b forms heterodimers with the CD8 $\alpha$  chain (CD8a). CD8 is an antigen co-receptor on T cells that interacts with MHC class I on antigen-presenting cells or epithelial cells. CD8 participates in T cell activation through its association with the T cell receptor complex and protein tyrosine kinase lck (p56lck).