

## Recombinant Human SIRP gamma/CD172g Protein (His Tag)

Catalog Number: PKSH030993

**Note:** Centrifuge before opening to ensure complete recovery of vial contents.

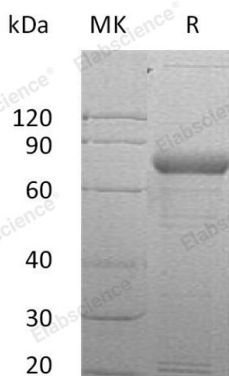
### Description

|                     |  |
|---------------------|--|
| <b>Species</b>      | Human  |
| <b>Source</b>       | HEK293 Cells-derived Human SIRP gamma/CD172g protein Met 1-Ser 364, with an C-terminal His   |
| <b>Mol_Mass</b>     | 34.7 kDa   |
| <b>Accession</b>    | NP_061026.2  |
| <b>Bio-activity</b> | Measured by its binding ability in a functional ELISA. Immobilized human SIRPG-His at 10 µg/ml (100 µl/well) can bind human CD47-Fc, The EC50 of human CD47-Fc is 0.58-1.34 µg/ml. |

### Properties

|                       |  |
|-----------------------|--|
| <b>Purity</b>         | > 96 % as determined by reducing SDS-PAGE.   |
| <b>Endotoxin</b>      | < 1.0 EU per µg of the protein as determined by the LAL method.  |
| <b>Storage</b>        | Generally, lyophilized proteins are stable for up to 12 months when stored at -20 to -80 °C. Reconstituted protein solution can be stored at 4-8°C for 2-7 days. Aliquots of reconstituted samples are stable at < -20°C for 3 months. |
| <b>Shipping</b>       | This product is provided as lyophilized powder which is shipped with ice packs.  |
| <b>Formulation</b>    | Lyophilized from sterile PBS, pH 7.4<br>Normally 5% - 8% trehalose, mannitol and 0.01% Tween 80 are added as protectants before lyophilization.<br>Please refer to the specific buffer information in the printed manual.              |
| <b>Reconstitution</b> | Please refer to the printed manual for detailed information.   |

### Data



> 96 % as determined by reducing SDS-PAGE.

### Background

#### For Research Use Only

Signal-regulatory protein gamma (SIRPG/SIRP gamma) also known as CD172 antigen-like family member B, CD172g, and CD172g antigen, is a member of the signal-regulatory protein (SIRP) family, and also belongs to the immunoglobulin superfamily. SIRP family members are receptor-type transmembrane glycoproteins known to be involved in the negative regulation of receptor tyrosine kinase-coupled signaling processes. SIRPG/SIRP gamma/CD172g is probable immunoglobulin-like cell surface receptor. On binding with CD47, SIRPG can mediate cell-cell adhesion. SIRPG/SIRP gamma is engagement on T-cells by CD47 on antigen-presenting cells results in enhanced antigen-specific T-cell proliferation and costimulates T-cell activation. SIRPG/SIRP gamma/CD172g is detected in liver, and at very low levels in brain, heart, lung, pancreas, kidney, placenta and skeletal muscle. Expressed on CD4+ T-cells, CD8+ T-cells, CD56-bright natural killer (NK) cells, CD20+ cells, and all activated NK cells. This cytokine is mainly present in the paracortical T-cell area of lymph nodes, with only sparse positive cells in the mantle and in the germinal center of B-cell follicles. In the thymus, SIRPG is primarily expressed in the medulla on mature T-lymphocytes that have undergone thymic selection.

## For Research Use Only

Toll-free: 1-888-852-8623  
Web: [www.elabscience.com](http://www.elabscience.com)

Tel: 1-832-243-6086  
Email: [techsupport@elabscience.com](mailto:techsupport@elabscience.com)

Fax: 1-832-243-6017