

MYL9 Polyclonal Antibody

catalog number: E-AB-12582

Note: Centrifuge before opening to ensure complete recovery of vial contents.

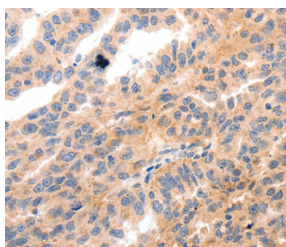
Description	
Reactivity	Human;Mouse;Rat
Immunogen	Synthetic peptide of human MYL9
Host	Rabbit
Isotype	IgG
Purification	Affinity purification
Conjugation	Unconjugated
Buffer	Phosphate buffered solution, pH 7.4, containing 0.05% stabilizer and 50% glycerol.
Applications	Recommended Dilution
WB	1:1000-1:5000
IHC	1:50-1:200

Data

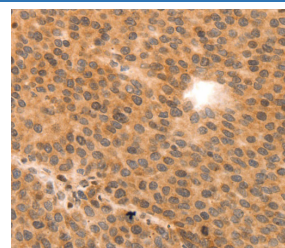


Western Blot analysis of Jurkat and 231 cell using MYL9 Polyclonal Antibody at dilution of 1:1500

Calculated-MW:14 kDa



Immunohistochemistry of paraffin-embedded Human ovarian cancer using MYL9 Polyclonal Antibody at dilution of 1:80



Immunohistochemistry of paraffin-embedded Human liver cancer using MYL9 Polyclonal Antibody at dilution of 1:80

Preparation & Storage	
Storage	Store at -20°C Valid for 12 months. Avoid freeze / thaw cycles.
Shipping	The product is shipped with ice pack,upon receipt,store it immediately at the temperature recommended.

Background

Myosin, a structural component of muscle, consists of two heavy chains and four light chains. The protein encoded by this gene is a myosin light chain that may regulate muscle contraction by modulating the ATPase activity of myosin heads. The encoded protein binds calcium and is activated by myosin light chain kinase. Two transcript variants encoding different isoforms have been found for this gene.

For Research Use Only