

## Recombinant Cathepsin B Monoclonal Antibody

catalog number: **AN301756L**

**Note:** Centrifuge before opening to ensure complete recovery of vial contents.

### Description

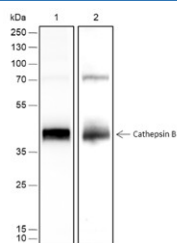
<b>Reactivity</b>	Human;
<b>Immunogen</b>	Recombinant human Cathepsin B fragment
<b>Host</b>	Rabbit
<b>Isotype</b>	IgG, $\kappa$
<b>Clone</b>	A464
<b>Purification</b>	Protein A purified
<b>Buffer</b>	PBS, 50% glycerol, 0.05% Proclin 300, 0.05% protein protectant.

### Applications

### Recommended Dilution

<b>WB</b>	1:1000-1:5000
-----------	---------------

### Data



Western Blot with Cathepsin B Monoclonal Antibody at dilution of 1:5000. Lane 1: A549, Lane 2: A375

**Observed-MW:38 kDa**

**Calculated-MW:38 kDa**

### Preparation & Storage

<b>Storage</b>	Store at -20°C Valid for 12 months. Avoid freeze / thaw cycles.
<b>Shipping</b>	Ice bag

### Background

Cathepsin B is a member of the C1 family of peptidases. This protein is a lysosomal cysteine protease with both endopeptidase and exopeptidase activity that may play a role in protein turnover. It is also known as amyloid precursor protein secretase and is involved in the proteolytic processing of amyloid precursor protein (APP). Incomplete proteolytic processing of APP has been suggested to be a causative factor in Alzheimer's disease. Overexpression of Cathepsin B has been associated with esophageal adenocarcinoma and other tumors. Both Cathepsin B and Cathepsin L are involved in the cleavage of the spike protein from the severe acute respiratory syndrome coronavirus 2 (SARS-CoV-2) upon its entry to the human host cell.

### For Research Use Only