

## Recombinant Human GDF-15 protein (His Tag)

**Catalog Number:** PDEH101053

**Note:** Centrifuge before opening to ensure complete recovery of vial contents.

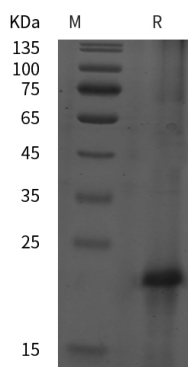
### Description

|                      |   |
|----------------------|---|
| <b>Species</b>       | Human   |
| <b>Source</b>        | E.coli-derived Human GDF-15 protein Gln151-Ile308, with an C-terminal His |
| <b>Calculated MW</b> | 17.3 kDa  |
| <b>Observed MW</b>   | 20 kDa  |
| <b>Accession</b>     | Q99988  |
| <b>Bio-activity</b>  | Not validated for activity  |

### Properties

|                       |  |
|-----------------------|--|
| <b>Purity</b>         | > 95% as determined by reducing SDS-PAGE.  |
| <b>Endotoxin</b>      | < 10 EU/mg of the protein as determined by the LAL method  |
| <b>Storage</b>        | Generally, lyophilized proteins are stable for up to 12 months when stored at -20 to -80 °C. Reconstituted protein solution can be stored at 4-8°C for 2-7 days. Aliquots of reconstituted samples are stable at < -20°C for 3 months. |
| <b>Shipping</b>       | This product is provided as lyophilized powder which is shipped with ice packs.  |
| <b>Formulation</b>    | Lyophilized from a 0.2 µm filtered solution in PBS with 5% Trehalose and 5% Mannitol.  |
| <b>Reconstitution</b> | It is recommended that sterile water be added to the vial to prepare a stock solution of 0.5 mg/mL. Concentration is measured by UV-Vis.   |

### Data



> 95 % as determined by reducing SDS-PAGE.

### Background

Growth/differentiation factors (GDF-1 to GDF-15) are members of the BMP family of TGF-beta superfamily proteins. They are produced as inactive preproteins which are then cleaved and assembled into active secreted homodimers. GDF dimers are disulfide-linked with the exception of GDF-3 and -9. GDF proteins are important during embryonic development, particularly in the skeletal, nervous, and muscular systems.