

## ZC3H10 Polyclonal Antibody

catalog number: **E-AB-66132**

**Note:** Centrifuge before opening to ensure complete recovery of vial contents.

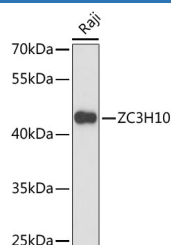
### Description

<b>Reactivity</b>	Human
<b>Immunogen</b>	Recombinant fusion protein of human ZC3H10 (NP_116175.1).
<b>Host</b>	Rabbit
<b>Isotype</b>	IgG
<b>Purification</b>	Affinity purification
<b>Buffer</b>	Phosphate buffered solution, pH 7.4, containing 0.05% stabilizer and 50% glycerol.

### Applications

Applications	Recommended Dilution
<b>WB</b>	1:500-1:2000

### Data



Western blot analysis of extracts of Raji cells using ZC3H10

Polyclonal Antibody at dilution of 1:3000.

**Observed-MV:46 kDa**

**Calculated-MV:46 kDa**

### Preparation & Storage

<b>Storage</b>	Store at -20°C Valid for 12 months. Avoid freeze / thaw cycles.
<b>Shipping</b>	The product is shipped with ice pack, upon receipt, store it immediately at the temperature recommended.

### Background

ZC3H10 (Zinc Finger CCCH-Type Containing 10) is a Protein Coding gene. Diseases associated with ZC3H10 include Raynaud Disease. An important paralog of this gene is MBNL1.

### For Research Use Only