

## PE/Cyanine7 Anti-Mouse TCR $\beta$ Antibody[H57-597]

**Catalog Number:** E-AB-F1123UH

**Note:** Centrifuge before opening to ensure complete recovery of vial contents.

### Description

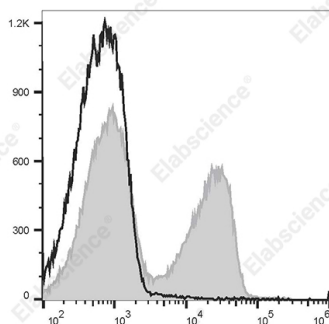
<b>Reactivity</b>	Mouse
<b>Host</b>	Armenian Hamster
<b>Isotype</b>	Armenian Hamster IgG
<b>Clone No.</b>	H57-597
<b>Isotype Control</b>	PE/Cyanine7 Armenian Hamster IgG Isotype Control[PIP] [Product E-AB-F09853H]
<b>Conjugation</b>	PE/Cyanine 7
<b>Conjugation Information</b>	PE/Cyanine7 is designed to be excited by the Blue (488 nm), Green (532 nm) and yellow-green (561 nm) lasers and detected using an optical filter centered near 775 nm (e.g., a 780/60 nm bandpass filter).
<b>Storage Buffer</b>	Phosphate buffered solution, pH 7.2, containing 0.09% stabilizer and 1% protein protectant.

### Applications

### Recommended usage

<b>FCM</b>	Each lot of this antibody is quality control tested by flow cytometric analysis. Please check your vial before the experiment. Since applications vary, the appropriate dilutions must be determined for individual use. We suggest each investigator should titrate the reagent to obtain optimal results [The recommended concentration is 0.1-1 $\mu$ g/ $10^6$ cells in 100 $\mu$ L volume].
------------	--

### Data



C57BL/6 murine splenocytes are stained with PE/Cyanine7 Anti-Mouse TCR $\beta$  Antibody[H57-597 (HB218)] (filled gray histogram) or PE/Cyanine7 Armenian Hamster IgG Isotype Control (empty black histogram).

### Preparation & Storage

<b>Storage</b>	Keep as concentrated solution. This product can be stored at 2-8°C for 12 months. Please protected from prolonged exposure to light and do not freeze.
<b>Shipping</b>	Ice bag

### Antigen Information

<b>Alternate Names</b>	TCR- $\beta\beta$ -TCR;TCR- $\beta$ chain
<b>Gene ID</b>	21577

### For Research Use Only

## Background

T cell receptor (TCR) is a heterodimer consisting of an  $\alpha$  and a  $\beta$  chain (TCR  $\alpha/\beta$ ) or a  $\gamma$  and a  $\delta$  chain (TCR  $\gamma/\delta$ ). TCR- $\beta$  is a member of the immunoglobulin superfamily and a component of the CD3/TCR complex (along with TCR- $\alpha$ ). It is expressed on  $\alpha/\beta$  TCR-bearing T cells and thymocytes. The CD3/TCR complex plays a key role in antigen recognition, signal transduction, and T cell activation.

## For Research Use Only