

Recombinant ICAM1 Monoclonal Antibody

catalog number: **AN301099L**

Note: Centrifuge before opening to ensure complete recovery of vial contents.

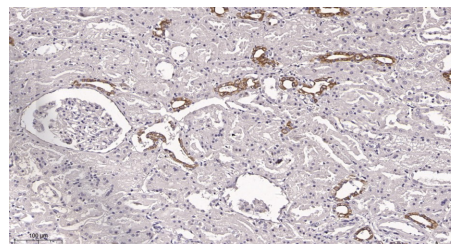
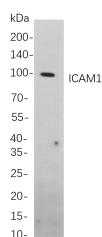
Description

Reactivity	Human
Immunogen	Recombinant Human ICAM1 protein
Host	Rabbit
Isotype	IgG, κ
Clone	B854
Purification	Protein A
Buffer	PBS, 50% glycerol, 0.05% Proclin 300, 0.05% protein protectant.

Applications Recommended Dilution

IHC	1:100-200
WB	1:1000-5000

Data



Western Blot with Recombinant ICAM1 Monoclonal Antibody Immunohistochemistry of paraffin-embedded human kidney at dilution of 1:1000 dilution. Lane A: Raji cells. tissue using Recombinant ICAM1 Monoclonal Antibody at

Observed-MW:100 kDa
Calculated-MW:58 kDa

dilution of 1:200.

Preparation & Storage

Storage	Store at -20°C Valid for 12 months. Avoid freeze / thaw cycles.
Shipping	Ice bag

Background

This gene encodes a cell surface glycoprotein which is typically expressed on endothelial cells and cells of the immune system. It binds to integrins of type CD11a / CD18, or CD11b / CD18 and is also exploited by Rhinovirus as a receptor.

For Research Use Only