

Recombinant Topoisomerase I Monoclonal Antibody

catalog number: **E-AB-81489**

Note: Centrifuge before opening to ensure complete recovery of vial contents.

Description

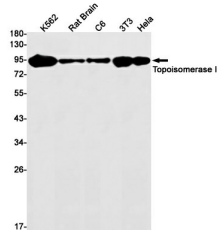
Reactivity	Human;Mouse
Immunogen	A synthetic peptide of human Topoisomerase I
Host	Rabbit
Isotype	IgG
Clone	R02-2H9
Purification	Affinity Purified
Buffer	50mM Tris-Glycine(pH 7.4), 0.15M NaCl, 40% Glycerol, 0.05% stabilizer and 0.05% protective protein.

Applications

Recommended Dilution

WB	1:1000-1:5000
IHC	1:50-1:100
IF	1:50-1:200

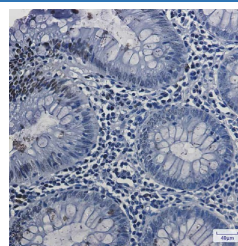
Data



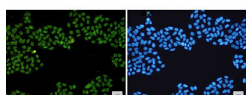
Western blot detection of Topoisomerase I in K562, Rat Brain, C6, 3T3, HeLa cell lysates using Topoisomerase I Rabbit mAb(1:1000 diluted). Predicted band size: 91kDa. Observed band size: 91kDa.

Observed-MW: 91 kDa

Calculated-MW: 91 kDa



Immunohistochemistry of Topoisomerase I in paraffin-embedded Human colon cancer tissue using Topoisomerase I Rabbit mAb at dilution 1:50



Immunofluorescence of Topoisomerase I (green) in HeLa cells using Topoisomerase I Rabbit mAb at dilution 1:200, and DAPI (blue)

Preparation & Storage

Storage	Store at -20°C Valid for 12 months. Avoid freeze / thaw cycles.
Shipping	The product is shipped with ice pack, upon receipt, store it immediately at the temperature recommended.

For Research Use Only

Background

This gene encodes a DNA topoisomerase, an enzyme that controls and alters the topologic states of DNA during transcription. This enzyme catalyzes the transient breaking and rejoining of a single strand of DNA which allows the strands to pass through one another, thus altering the topology of DNA. This gene is localized to chromosome 20 and has pseudogenes which reside on chromosomes 1 and 22.

For Research Use Only