

## FRMD6 Polyclonal Antibody

**catalog number: E-AB-68041**

**Note:** Centrifuge before opening to ensure complete recovery of vial contents.

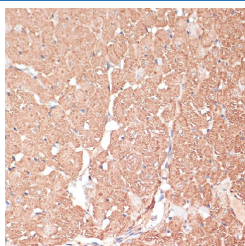
### Description

<b>Reactivity</b>	Human;Mouse;Rat
<b>Immunogen</b>	Recombinant fusion protein of human FRMD6 (NP_689543.1).
<b>Host</b>	Rabbit
<b>Isotype</b>	IgG
<b>Purification</b>	Affinity purification
<b>Buffer</b>	Phosphate buffered solution, pH 7.4, containing 0.05% stabilizer and 50% glycerol.

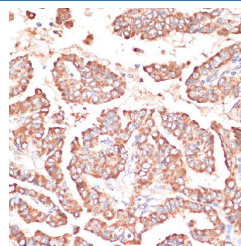
### Applications

Applications	Recommended Dilution
IHC	1:50-1:200
IF	1:50-1:200

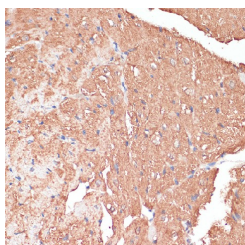
### Data



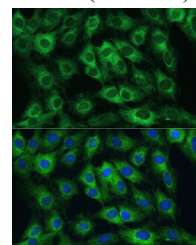
Immunohistochemistry of paraffin-embedded Rat heart using FRMD6 Polyclonal Antibody at dilution of 1:100 (40x lens).



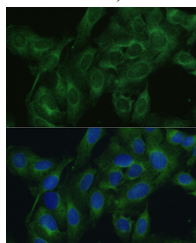
Immunohistochemistry of paraffin-embedded Human thyroid cancer using FRMD6 Polyclonal Antibody at dilution of 1:100 (40x lens).



Immunohistochemistry of paraffin-embedded Mouse heart using FRMD6 Polyclonal Antibody at dilution of 1:100 (40x lens).



Immunofluorescence analysis of C6 cells using FRMD6 Polyclonal Antibody at dilution of 1:100. Blue: DAPI for nuclear staining.



Immunofluorescence analysis of U2OS cells using FRMD6 Polyclonal Antibody at dilution of 1:100. Blue: DAPI for nuclear staining.

### Preparation & Storage

### For Research Use Only

**Storage**

Store at -20°C Valid for 12 months. Avoid freeze / thaw cycles.

**Shipping**

The product is shipped with ice pack, upon receipt, store it immediately at the temperature recommended.

**Background**

FRMD6 (FERM Domain Containing 6) is a Protein Coding gene. Diseases associated with FRMD6 include Wilson-Turner X-Linked Mental Retardation Syndrome. Among its related pathways are Neuroscience and Hippo signaling pathway - multiple species. An important paralog of this gene is EPB41L3.

**For Research Use Only**