

## AASDHPPT Polyclonal Antibody

**catalog number: E-AB-10693**

**Note:** Centrifuge before opening to ensure complete recovery of vial contents.

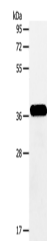
### Description

<b>Reactivity</b>	Human;Mouse;Rat
<b>Immunogen</b>	Recombinant protein of human AASDHPPT
<b>Host</b>	Rabbit
<b>Isotype</b>	IgG
<b>Purification</b>	Affinity purification
<b>Buffer</b>	Phosphate buffered solution, pH 7.4, containing 0.05% stabilizer and 50% glycerol.

### Applications

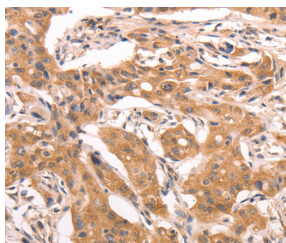
Applications	Recommended Dilution
<b>WB</b>	1:500-1:2000
<b>IHC</b>	1:50-1:200

### Data

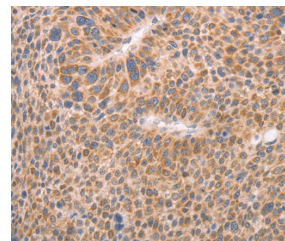


Western Blot analysis of Human fetal brain tissue using AASDHPPT Polyclonal Antibody at dilution of 1:600

**Calculated-MW:36 kDa**



Immunohistochemistry of paraffin-embedded Human lung cancer using AASDHPPT Polyclonal Antibody at dilution of 1:30



Immunohistochemistry of paraffin-embedded Human liver cancer using AASDHPPT Polyclonal Antibody at dilution of 1:30

### Preparation & Storage

<b>Storage</b>	Store at -20°C Valid for 12 months. Avoid freeze / thaw cycles.
<b>Shipping</b>	The product is shipped with ice pack, upon receipt, store it immediately at the temperature recommended.

### Background

The protein encoded by this gene is similar to *Saccharomyces cerevisiae* LYS5, which is required for the activation of the alpha-amino adipate dehydrogenase in the biosynthetic pathway of lysine. Yeast alpha-amino adipate dehydrogenase converts alpha-biosynthetic-amino adipate semialdehyde to alpha-amino adipate. It has been suggested that defects in the human gene result in pipecolic acidemia.

### For Research Use Only