

Recombinant SUMO Conjugating Enzyme UBE2I Monoclonal Antibody

catalog number: **E-AB-81514**

Note: Centrifuge before opening to ensure complete recovery of vial contents.

Description

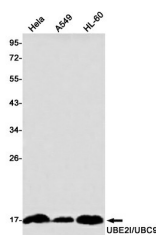
Reactivity	Human;Mouse;Rat
Immunogen	A synthetic peptide of human UBE2I/UBC9
Host	Rabbit
Isotype	IgG
Clone	R01-6I6
Purification	Affinity Purified
Buffer	50mM Tris-Glycine(pH 7.4), 0.15M NaCl, 40% Glycerol, 0.05% stabilizer and 0.05% protective protein.

Applications

Recommended Dilution

WB	1:500-1:1000
IHC	1:50-1:100

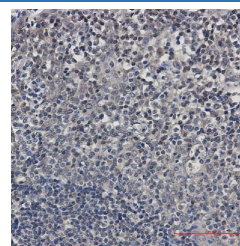
Data



Western blot detection of UBE2I/UBC9 in HeLa, A549, HL-60 using UBE2I/UBC9 Rabbit mAb(1:1000 diluted)

Observed-MW:18 kDa

Calculated-MW:18 kDa



Immunohistochemistry of UBE2I/UBC9 in paraffin-embedded Human tonsil using UBE2I/UBC9 Rabbit mAb at dilution 1:50

Preparation & Storage

Storage	Store at -20°C Valid for 12 months. Avoid freeze / thaw cycles.
Shipping	The product is shipped with ice pack, upon receipt, store it immediately at the temperature recommended.

Background

UBE2I is also named as UBC9, UBCE9 and belongs to the ubiquitin-conjugating enzyme family. It is a homologue of the E2 ubiquitin conjugating enzyme and participates in the covalent linking of SUMO-1 molecule to the target protein. This protein is present at a high level in spleen and lung. Moderate level of UBE2I is detected in kidney and liver. Low amount of UBE2I is observed in brain, whereas the 18 kDa band of UBE2I is barely visible or absent in heart and skeletal muscle. In heart and muscle extracts the UBE2I antibodies recognizes a 38 kDa protein band, but this band is not visible in extracts of other rat tissues.

For Research Use Only