

Recombinant Human Carboxypeptidase B1/CPB1 Protein (His Tag)

Catalog Number: PKSH032171

Note: Centrifuge before opening to ensure complete recovery of vial contents.

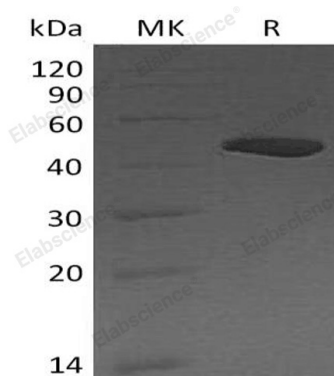
Description

Species	Human
Source	HEK293 Cells-derived Human Carboxypeptidase B1;CPB1 protein His 16-Tyr417, with an C-terminal His
Calculated MW	46.9 kDa
Observed MW	47 kDa
Accession	P15086
Bio-activity	Not validated for activity

Properties

Purity	> 95 % as determined by reducing SDS-PAGE.
Concentration	Subject to label value.
Endotoxin	< 1.0 EU per µg of the protein as determined by the LAL method.
Storage	Store at < -20°C, stable for 6 months. Please minimize freeze-thaw cycles.
Shipping	This product is provided as liquid. It is shipped at frozen temperature with blue ice/gel packs. Upon receipt, store it immediately at < - 20°C.
Formulation	Supplied as a 0.2 µm filtered solution of 20mM MES, 150mM NaCl, pH 5.5.

Data



> 95 % as determined by reducing SDS-PAGE.

Background

Carboxypeptidase B1 is an exopeptidase which specifically cleaves the C-terminal Arg and Lys residues with a preference for Arg. Expressed mainly in pancreas, CPB1 is a useful serum marker for acute pancreatitis and pancreatic graft rejection. Human CPB1 consists of a signal peptide, a pro region, and a mature chain. The purified rhCPB1 corresponds to the pro form, which can be activated by trypsin, the only pancreatic protease capable of generating active enzyme from the zymogen in vitro.