

Recombinant SBDS Monoclonal Antibody

catalog number: **AN301724L**

Note: Centrifuge before opening to ensure complete recovery of vial contents.

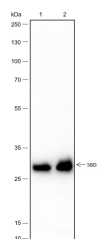
Description

Reactivity	Human;Rat;Mouse
Immunogen	Recombinant human SBDS fragment
Host	Rabbit
Isotype	IgG, κ
Clone	A432
Purification	Protein A purified
Buffer	PBS, 50% glycerol, 0.05% Proclin 300, 0.05% protein protectant.

Applications Recommended Dilution

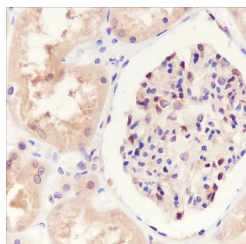
WB	1:1000-1:5000
IHC	1:200-1:1000
IF	1:50

Data

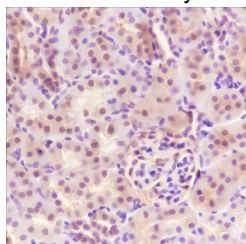


Western Blot with SBDS Monoclonal Antibody at dilution of 1:5000. Lane 1: 293T, Lane 2: CaCO-2

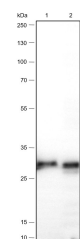
Observed-MW:29 kDa
Calculated-MW:29 kDa



Immunohistochemistry of paraffin-embedded Human kidney using SBDS Monoclonal Antibody at dilution of 1:1000.

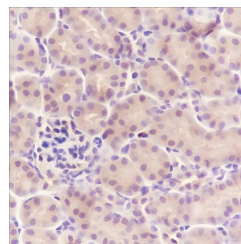


Immunohistochemistry of paraffin-embedded Rat kidney using SBDS Monoclonal Antibody at dilution of 1:1000.

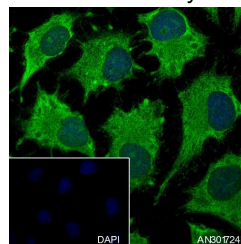


Western Blot with SBDS Monoclonal Antibody at dilution of 1:5000. Lane 1: Mouse lung, Lane 2: Rat lung

Observed-MW:29 kDa
Calculated-MW:29 kDa



Immunohistochemistry of paraffin-embedded Mouse kidney using SBDS Monoclonal Antibody at dilution of 1:1000.



Immunofluorescent analysis of (100% Ice-cold methanol) fixed Hela cells using anti-SBDS Monoclonal Antibody at dilution of 1:50.

For Research Use Only

Toll-free: 1-888-852-8623
Web: www.elabscience.com

Tel: 1-832-243-6086
Email: techsupport@elabscience.com

Fax: 1-832-243-6017

Rev. V1.0

Preparation & Storage

Storage	Store at -20°C Valid for 12 months. Avoid freeze / thaw cycles.
Shipping	Ice bag

Background

This gene encodes a highly conserved protein that plays an essential role in ribosome biogenesis. The encoded protein interacts with elongation factor-like GTPase 1 to disassociate eukaryotic initiation factor 6 from the late cytoplasmic pre-60S ribosomal subunit allowing assembly of the 80S subunit. Mutations within this gene are associated with the autosomal recessive disorder Shwachman-Bodian-Diamond syndrome. This gene has a closely linked pseudogene that is distally located.

For Research Use Only