

SLC16A4 Polyclonal Antibody

Catalog Number: E-AB-12560 1 Publications



Note: Centrifuge before opening to ensure complete recovery of vial contents.

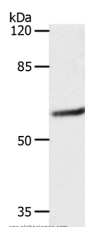
Description

Reactivity	Human
Immunogen	Synthetic peptide of human SLC16A4
Host	Rabbit
Isotype	IgG
Purification	Affinity purification
Conjugation	Unconjugated
Formulation	PBS with 0.05% sodium azide and 50% glycerol, PH7.4

Applications Recommended Dilution

WB	1:1000-1:5000
-----------	---------------

Data



Western Blot analysis of 231 cell using SLC16A4 Polyclonal Antibody at dilution of 1:1200
Calculated Mw:54kDa

Preparation & Storage

Storage Store at -20°C. Avoid freeze / thaw cycles.

Background

Monocarboxylate transporter 5 is a protein that in humans is encoded by the SLC16A4 gene. Proton-linked monocarboxylate transporter. Catalyzes the rapid transport across the plasma membrane of many monocarboxylates such as lactate, pyruvate, branched-chain oxo acids derived from leucine, valine and isoleucine, and the ketone bodies acetoacetate, beta-hydroxybutyrate and acetate.

For Research Use Only

A Reliable Research Partner in Life Science and Medicine

Toll-free: 1-888-852-8623

Web: www.elabscience.com

Tel: 1-832-243-6086

Email: techsupport@elabscience.com

Fax: 1-832-243-6017