

Recombinant Prothrombin Monoclonal Antibody

catalog number: **AN301787L**

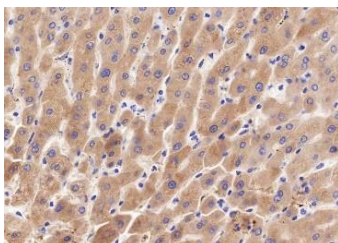
Note: Centrifuge before opening to ensure complete recovery of vial contents.

Description

Reactivity	Human;
Immunogen	Recombinant human Prothrombin fragment
Host	Rabbit
Isotype	IgG, κ
Clone	A495
Purification	Protein A purified
Buffer	PBS, 50% glycerol, 0.05% Proclin 300, 0.05% protein protectant.

Applications Recommended Dilution

WB	1:1000-1:5000
IHC	1:50-1:100



Immunohistochemistry of paraffin-embedded Human liver using Prothrombin Monoclonal Antibody at dilution of 1:100.

Preparation & Storage

Storage	Store at -20°C Valid for 12 months. Avoid freeze / thaw cycles.
Shipping	Ice bag

Background

Prothrombin is a protein made by the liver. It is a coagulation (clotting) factor that is needed for the normal clotting of blood. A cascade of biochemical events leads to the formation of the final clot. In this cascade, prothrombin is a precursor to thrombin. Prothrombin time (PT) is a blood test that measures how long it takes blood to clot. A prothrombin time test can be used to check for bleeding problems. PT is also used to check whether medicine to prevent blood clots is working.

For Research Use Only