

MAN2B1 Polyclonal Antibody

Catalog Number:E-AB-93018



Note: Centrifuge before opening to ensure complete recovery of vial contents.

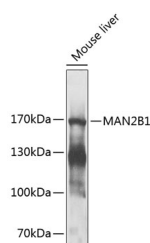
Description

Reactivity	Mouse
Immunogen	Recombinant fusion protein of human MAN2B1
Host	Rabbit
Isotype	IgG
Purification	Affinity purification
Conjugation	Unconjugated
Formulation	PBS with 0.02% sodium azide, 50% glycerol, pH7.3.

Applications Recommended Dilution

WB	1:500-1:2000
-----------	--------------

Data



Western blot analysis of extracts of mouse liver using
MAN2B1 Polyclonal Antibody at 1:1000 dilution.

Observed MW:170kDa

Calculated Mw:113kDa

Preparation & Storage

Storage Store at -20°C. Avoid freeze/thaw cycles.

Background

This gene encodes an enzyme that hydrolyzes terminal, non-reducing alpha-D-mannose residues in alpha-D-mannosides. Its activity is necessary for the catabolism of N-linked carbohydrates released during glycoprotein turnover and it is member of family 38 of glycosyl hydrolases. The full length protein is processed in two steps. First, a 49 aa leader sequence is cleaved off and the remainder of the protein is processed into 3 peptides of 70 kDa, 42 kDa (D) and 13/15 kDa (E). Next, the 70 kDa peptide is further processed into three peptides (A, B and C). The A, B and C peptides are disulfide-linked. Defects in this gene have been associated with lysosomal alpha-mannosidosis. Alternatively spliced transcript variants encoding different isoforms have been found for this gene.

For Research Use Only

A Reliable Research Partner in Life Science and Medicine

Toll-free: 1-888-852-8623

Web: www.elabscience.com

Tel: 1-832-243-6086

Email: techsupport@elabscience.com

Fax: 1-832-243-6017